



# Achieve your ambitions

2025/26

Paston College Prospectus





# Get the latest ON OUR COURSES

**You will find dates and details for all  
our events on our website.**

Visit: [paston.ac.uk/events](http://paston.ac.uk/events)

## Open Days

We hold open days each term when you can come along to our campus and see our fantastic facilities, meet our expert teaching staff and get answers to all of your questions.

## Live Chat

Ask anything you like about studying at Paston College. Live chat is available via our website and we have course advisers available for you.

## Campus Tours

Take a tour with one of our Student Ambassadors, explore our facilities and get answers to all of your questions. See our study spaces up close, and get an inside look at what life is like on campus.

## Website

Our website has lots of information from detailed course content to financial help. All your practical questions – from travelling to College to where you can eat on campus – are answered too. A virtual tour of the campus is available to give you a sense of Paston College life.

---

**Follow us on social media to keep up-to-date with what our current students are doing and what's happening around campus.**

 @pastoncollege

 @pastoncollege

 pastoncollege



# Contents

## Our College

Three Colleges	6
About us	8
Welcome	10
An inspirational place to study	12
Student destinations	14
Our facilities	16
Our campus	20

## Student life

Your student experience	22
Preparing for your career	24
Ways of Working	26

## Support, advice & career guidance

Study options	28
Progression routes	30
Student support	32
The Advice Shop	34
Maths & English	36
Travelling to College	38
How to apply	40

## Courses

Art & Design BTEC	44	Media & Film Studies	90
Biology	46	Philosophy & Religion	94
Business	48	Photography	96
Chemistry	52	Physical Education, Sport	98
Computing	54	Physics	102
Criminology	56	Politics	104
Drama & Theatre Studies	58	Psychology	106
Education & Early Years	62	Sociology	108
English	64	Textile Design	110
Environmental Science	68	Vocational Studies	112
Fine Art	70	Oxbridge & A+ Programmes	114
French	72	Leisure Learning	115
Geography	74	Inclusive Learning	116
Graphic Communication	76	Professional Development	118
Health & Social Care	78	Adult Essential Skills	119
History	80	City College Norwich courses	120
History of Art	82	Easton College courses	122
Law	84		
Maths	86		

All information is correct at the time of print (August 2024). Visit [paston.ac.uk](http://paston.ac.uk) for the most up to date information.



# Three Colleges

**Our colleges offer the widest range  
of courses in Norfolk...**



A Levels  
Art, Design, Photography & Fashion  
Automotive  
Business, Management & Administration  
Childcare & Early Years  
Construction & Building Services  
Creative Media  
Engineering  
ESOL  
Games Design & Development, Digital Art & Animation  
Hairdressing & Beauty Therapy  
Health & Social Care  
Hospitality & Catering  
Inclusive Learning  
Information Technology & Digital  
Performing & Production Arts  
Science  
Travel & Tourism

[www.ccn.ac.uk](http://www.ccn.ac.uk)



Agricultural Engineering  
Agriculture  
Animal Studies  
Construction & Building Services  
Environmental Conservation & Countryside Management  
Equine Studies  
Floristry  
Forestry & Arboriculture  
Horticulture  
Inclusive Learning  
Outdoor Leadership  
Science  
Sport  
Uniformed Services

[www.easton.ac.uk](http://www.easton.ac.uk)



Art & Design  
Business  
Computing  
Drama & Theatre Studies  
Education & Early Years  
English  
French  
Health & Social Care  
Humanities  
Inclusive Learning  
Information Technology  
Law  
Maths  
Media & Film Studies  
Philosophy & Religion  
Photography  
Politics  
Sciences  
Social Sciences  
Sports  
Textile Design

[www.paston.ac.uk](http://www.paston.ac.uk)

**See the course directory at the back of this prospectus for a listing of  
all courses offered across our three college campuses.**



### Advanced Construction & Engineering Centre (Norwich)

Fully equipped for teaching the skills needed for a low carbon future, the ACE Centre includes a sustainable transport workshop with electric vehicles and the latest diagnostic equipment, including Haas precision engineering machines, and a construction lab.



### Animal Management Centre (Easton)

Designed to reflect the latest animal management facilities and practices in zoos and aquariums. Students have opportunities to work with endangered aquatic species thanks to our links with Zoological Society London.



### Centre for Excellence in Sport (Easton)

From our Tennis Centre that is used to host professional tournaments, to the latest equipment for testing elite level performance, our Centre for Excellence is set up to give students a head-start in the sports and leisure industry.



### Digi-Tech Factory (Norwich)

A unique facility that is purpose-built for teaching the latest digital skills, from coding and hardware to advanced manufacturing, animation and games design, media production, construction and engineering design.



### Griffon Theatre (Paston)

Home to our performing arts and drama courses and The Paston Far East Theatre Company, the Griffon Theatre boasts the latest digital sound, lighting and production technology, a cyclorama and movable seating to enable 'in the round' style theatre.



### Health Wing (Norwich)

Key features of a modern hospital ward, lifelike simulators provide healthcare students with opportunities to develop their skills in patient care. The Health Wing also has a 3D anatomy visualisation and virtual dissection table, which is one of very few in the country.



### International Aviation Academy Norwich

A world class training centre located next to Norwich Airport that is designed to train the next generation of aviation professionals. Its Aviation Emulation Zone® includes a Boeing 737 aircraft for students to practise all aspects of aircraft maintenance.



### Construction Skills Centre (Norwich)

Our new centre is equipped with state-of-the art equipment and tools to train the next generation of electricians. The 1,200 m<sup>2</sup> building has been designed with flexibility in mind and can be adapted in the future as industry demand for different trades evolves.

# About us...

**26**

**A Levels**

to choose from

**T**

**T Levels**

are available  
at Paston College



**Around 25%**

of students going on to university  
are accepted at the UK's leading  
universities each year

**Ofsted**

Good  
Provider

**Rated**

**'Good'**

by Ofsted 2021



students  
**Union**

---

## **NUS affiliated**

Students' Union that ensures that your voice is heard throughout your time at college



---

## **Oxbridge**

each year Oxbridge welcomes students from Paston



---

## **419 years**

of history.  
Paston College was founded in 1606 by Sir William Paston



---

## **Norfolk's largest provider**

---

as part of City College Norwich, together we combine to serve more students at A Level than any other provider in Norfolk







# Welcome



Paston College has everything you need to achieve and succeed, offering a fantastic learning experience and great support to help you reach your chosen destination.

**Here at Paston College, we have everything you need to achieve and succeed – great teachers, an inspiring learning environment, a fantastic college experience, and the right support to help you achieve and reach your chosen destination.**

Paston has a long-standing reputation for combining academic excellence with a relaxed, friendly atmosphere. Traditionally this related to our A Level courses, but today you can choose from a wide range of courses spanning A Levels, T Levels, and other specialist vocational learning. All our courses are taught by passionate and inspiring teachers, on an attractive and friendly campus with great facilities.

With a wider range of courses to choose from, your very own NUS-affiliated Students' Union, and lots of opportunities to add learning and work-related experiences to your CV or UCAS personal statement, Paston offers a superb all-round student experience.

There are even more opportunities for Paston students because the college is part of City College Norwich. For example, every year we organise a week-long trip to either New York or Berlin, which brings together students from Paston and Norwich for an unforgettable learning and cultural experience.

We provide our students with the support and opportunities to develop into confident, independent learners, with well-developed interests in and out of college. Our students consistently achieve outstanding results, with most going on to university, and around 25% accepted into leading universities every year. Among those who are keen to begin their career, our students also have a great track record of moving on to high quality apprenticeships and jobs.

If you've not been already, we look forward to welcoming you so that you can discover for yourself all that Paston College has to offer, get a feel for what it's like to study here, and ask us any questions you may have.

**Jerry White**  
Principal

# An inspirational place to study



## Wider choice of courses

In addition to our A Levels, we offer a wide range of vocational Career Focused (BTEC, T Level, UAL) courses.

We were one of the first Colleges in the country to offer the new T Level qualifications and new courses are being added all the time.

We offer you more choice than ever before, allowing you to find the right course for you.



**Our College has a strong history of high achievement which sees our students progress on to university, employment and apprenticeships. We offer expert teaching, guidance and support to help ensure you achieve your aspirations.**

**Here are just some of the things that make Paston College an inspirational place to study:**



### **Excellent results**

**Paston College has a long tradition of outstanding results.**

This is the result of our specialist teachers who are passionate about their subjects and motivate and inspire students.

In 2024, 64% of our A Level students achieved A\* - C grades, with over 40% of students being awarded with a B or above.



### **A friendly, supportive environment**

**We pride ourselves on the welcoming and friendly atmosphere offered at Paston College.**

Unlike traditional school sixth forms, our students are treated like adults. You'll have real independence whilst also being given access to a wide range of help and support including specialist support for university, apprenticeship and job applications. This helps ensure that you succeed and achieve your aspirations.



### **Outstanding progression**

**Our students progress to outstanding destinations.**

The majority of students progress to university. Around 25% of those who apply are accepted at some of the country's leading universities including Oxford and Cambridge. A number of students also progress to high quality apprenticeships and jobs.

# Student destinations

Every student is given individual and specialist support, advice and guidance to achieve their potential

Our students progress to some outstanding destinations after completing their courses at Paston College.

A large majority gain places at university with around 25% of those who apply being accepted at some of the country's leading universities including Oxford and Cambridge.

Although the majority of our students choose to progress to university, a large number also choose to go on to high quality apprenticeships and other professional jobs.

We also see students deferring their university places for a year to allow them to travel and gain once in a lifetime experiences.





Here's where some of our students progressed on to after completing their Paston College courses.

Destination	Course/Job
Anglia Ruskin University	Criminology
Bath Spa University	Textile Design for Fashion & Interiors
University of Birmingham	English & Philosophy History of Art Human Neuroscience
Durham University	Psychology English Literature
University of Cambridge	Modern & Medieval Languages  Law  Natural Sciences
University of Chichester	Acting for Film
Easton College	Professional Policing
University of East Anglia (UEA)	Business Management Ecology and Conservation French Japanese

Destination	Course/Job
University of Exeter	Law
University of Newcastle upon Tyne	Marine Biology
Royal Holloway, University of London	Drama with Acting
North Norfolk County Council	Property and Estates Administration apprentice
Nottingham Trent University	Fashion Design Fine Art
University of Oxford	History Law
University of Sheffield	Aerospace Engineering
University of Sussex	Filmmaking
University of Westminster	Fashion Buying Management
University of Winchester	Forensic Investigative Psychology
University of York	Electronic & Computer Engineering  Physics with Astrophysics
Central Saint Martins	Art & Design Foundation

# Our Facilities



*We have a range of outstanding facilities that allow our students to expand their interests and prepare for life after college.*



## Scarburgh Science Centre

**Paston College has an excellent reputation in Science.**

To provide students with state-of-the-art facilities and enhanced laboratory space, £1.5m has been invested in creating the Scarburgh Science Centre. The Centre is home to a set of completely refurbished science laboratories that meet professional standards, preparation rooms and an atrium entrance.



## Griffon Theatre

**The Griffon Theatre is home to our performing arts and drama courses and The Paston Far East Theatre Company.**

The theatre has undergone extensive improvements as part of a £1.5m refurbishment. It boasts the latest digital sound, lighting and production technology, a cyclorama and movable seating to enable 'in the round' style theatre.

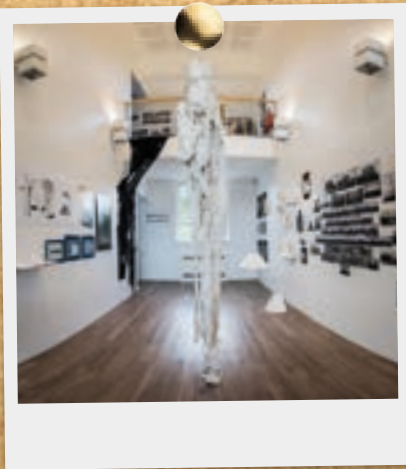




## Griffon Studios

**The Griffon Studios are home to our art, photography and textiles courses.**

The studio provides light and large classrooms with screen printing facilities, a beautiful exhibition space, IT areas and photography dark room.



## The Study Hub

**If you need a space for some quiet study and to access resources, our Study Hub has everything you need.**

Our Study hub provides access to a range of resources to help you with your course. This includes books, journals and periodicals. Alongside this, you will also find lots of study spaces for individual and group work, and there is always a member of Study Hub staff available to help you use the Study Hub and find what you need.

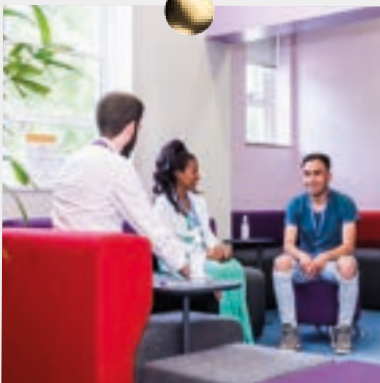


## The Advice Shop

**Need some support, advice or guidance on your next steps and beyond?**

Our friendly Advice Shop team offer expert advice on everything from careers and finance, to travel and wellbeing. Open to all students and you can drop-in or book an appointment.

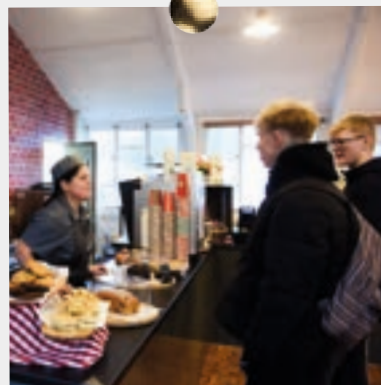
The team make sure you have the support and advice you need so you can focus on your studies.



## Café

**Taking time to relax outside of the classroom is important.**

Our Starbucks café is the 'go-to' place for both students and staff, providing excellent quality food and drink throughout the year.



# Our campus

Paston College is a unique and interesting place to study with a mixture of historic and modern buildings.

Paston is based in the heart of the historic market town of North Walsham. The college campus is spread across two sites that are a short walk away from each other.



## The Griffons site

The Griffons site is based on Grammar School Road and is home to our industry standard Griffons Studios and the Griffon Theatre.

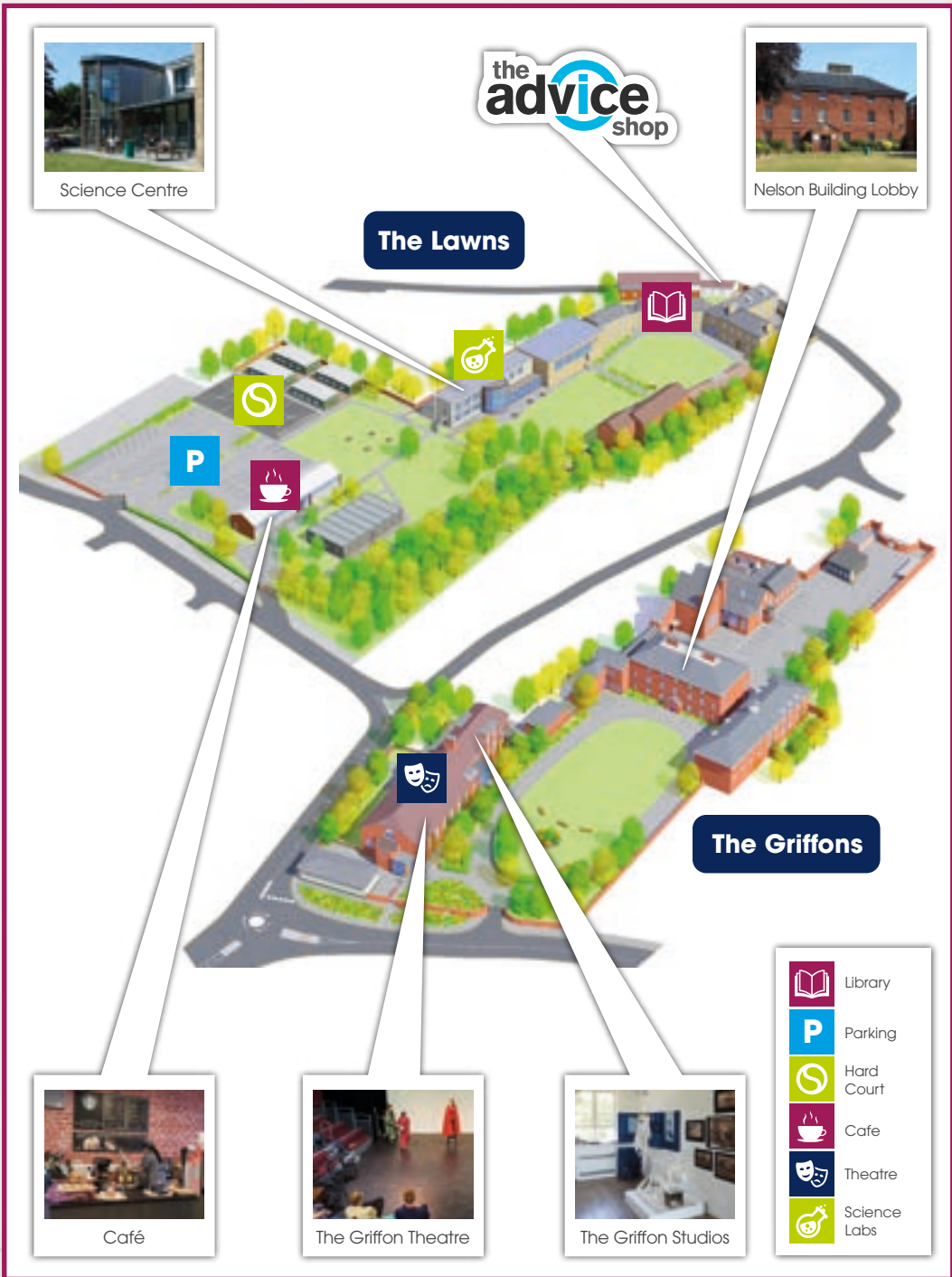
It is also the original Paston site which dates back to 1606 and is home to the historic Nelson Room where Lord Nelson studied before he joined the Royal Navy in 1771.

## The Lawns site

Based around the corner from The Griffons site on Park Lane, The Lawns is home to our Student Services Centre, Café and state of the art Scarborough Science Centre.

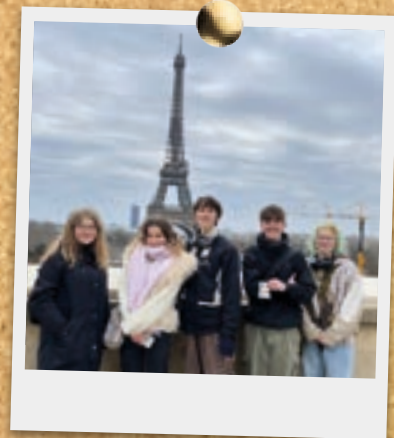
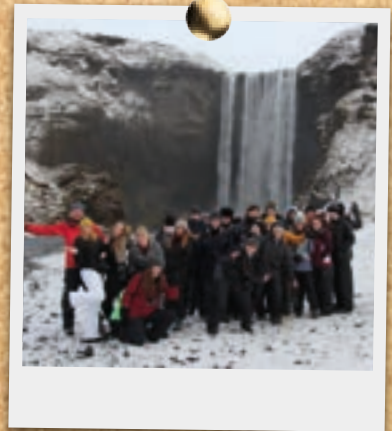






# Your student experience

“ I really liked  
the atmosphere  
and how friendly  
everyone was ”



**There's a great atmosphere at Paston College both in the classroom and outside of lessons.**

**Alongside your studies, we offer a variety of enrichment opportunities for you to meet new people and enhance your UCAS personal statement or CV by getting involved in interesting and rewarding activities.**

**Students' Union**

Being at college is as much about your personal development as your academic studies. Qualifications are vital, but qualifications on their own are not enough. To help you enhance your student experience, we have a dedicated Students' Union (SU) to support you during your studies.

The SU is made up of every single student at Paston College, City College Norwich and Easton College. Once you enrol, you automatically become a member of the SU who will make sure that your voice is represented and that you enjoy your time at college through representation at Student Parliament. The SU not only provides a wide range of activities for you to get involved in, but will also encourage you to develop your leadership skills.

**Duke of Edinburgh Award**

The Duke of Edinburgh Award is the world's leading youth achievement award that gives young people the chance to develop skills for life and work, fulfil their potential and have a brighter future. You can complete the Silver or Gold award with us by taking part in a wide range of exciting activities from rocket making to yoga!

This award is highly regarded by universities as it shows a strong level of commitment, determination and team work. By completing the Duke of Edinburgh award you'll be learning new skills, making a difference in your local community, challenging yourself and finding hidden talents.

**Trips**

Depending on the subjects you study, there are opportunities to attend a variety of trips abroad or closer to home. Our students have visited the Tate Modern, Clothes Show Live, European Parliament, Supreme Court of Justice, Cambridge and Oxford universities, Madagascar, China, Norway, Iceland, South Africa, New York, Amsterdam and many more.

**Visiting speakers**

To help you discover what career path you want to follow, we offer a visiting speaker programme which allows you to attend sessions run by industry professionals throughout the year. Whatever you're interested in you will learn what the career is really like from the people actually doing them.



# Preparing for your career

“ I chose Paston  
because of the  
aspiration it had  
for its students ”

At Paston College we provide you with much more than just a qualification. We work closely with employers across all of our subject areas to give you opportunities and experiences that will prepare you for your future career.

## Employability Skills

In addition to developing course specific skills and knowledge, we also support you to develop key attributes that are valued by employers. These include:

- Managing your time effectively
- Communication, literacy and numeracy skills
- Helping you to become a problem solver
- Helping you to develop a positive, confident attitude
- Increasing your business and customer awareness
- Working well on your own and in a team

We also provide opportunities for practice interviews, working on your CV and learning how to go about finding a job. All the advice and support you need to be job ready, and successful at interview, is right here.



## Experience of Work

Gaining experience of work in your chosen area of study is vitally important to help boost your employability after college. It is also an excellent opportunity for you to:

- Put your new knowledge into practice
- Further develop your technical and employability skills
- Build confidence
- Identify your strengths and preferences for your future career
- Develop a deeper understanding of the working world in your chosen industry
- Gain a full and more meaningful employer reference to help you secure future employment or an apprenticeship

There are many ways in which we help you prepare for the world of work. We provide a range of opportunities and experiences to give you a first-hand understanding of what it is like to work in particular industries and job roles. The experience of work you get will depend on your course and level – but all students are given opportunities to develop the skills, experiences and behaviours that are valued by employers.

Some of the ways in which you could be gaining experience of work with us are:

.....

## Trips & visits

Group visits to places that are relevant to your chosen sector take place throughout the year which could be anything from law courts (Law) and famous overseas galleries (Art & Fashion and Media).

## Industry Placements

Regular, ongoing work experience with an employer. Students studying some of our Level 3 Technical qualifications (T-Level) are required to take part in industry placements. Most placements will take place during a normal working day but, depending on what you're interested in, your placement may involve working outside normal hours to give you a taste of that industry. They can work on a day release basis throughout the year or in larger blocks during the spring and summer terms. Placements can vary in length but must last a minimum of 315 hours.

.....

## Work Experience

Shorter periods of time spent working with an employer to gain direct experience of job roles you could be doing in the future.

.....

## Talks & networking

Former students, employers and industry experts regularly come into the college to meet with students and talk about what it's really like to work in their chosen sectors, answer questions and give you the information you need to successfully realise your career goals.

.....

## Live briefs

For some courses, there are also opportunities to work on projects for an employer. We call these live briefs because they are not just exercises, but real projects where the employer will use the outcomes from your work – great experience and a positive addition to any CV or portfolio.



Method

Several dilutions were made from a sample collected from a swimming pool. The sample was diluted 10 times in distilled water. The number of bacteria was counted using a spreader, pipette and a 100 µm diameter test tube.

1. Add 9.9 ml of distilled water
2. Add 0.1 ml of bacterial suspension
3. Use a clean pipette, repeat the dilution into 9.9 ml freshly made dilution
4. Transfer into a 100 µm agar plate



# Ways of Working

**As a student of our College you will be expected to make a commitment to study in line with the College's Ways of Working, which current students and staff strive to put into practice each day.**

Our Ways of Working ensures the College community provides a welcoming, open and positive experience for all students and staff. You will receive more information during your induction.

## We are...



**Kind & Curious**



**Open & Informative**



**Respectful & Fair**



**Collaborative & Inclusive**



**Consistent & Responsible**

# Study options

Not sure what type of course to choose? We have lots of study options that will help you get to where you want to be.

A

## A Levels

Perfect for those who are looking for an academic study option that allows you to study a variety of different subjects. Most A Level programmes consist of three subjects.

You will be taught by specialist A Level teaching staff and study in a mature learning environment that is very different to being at school.

For those interested in Biology or Psychology based subjects, you can study Criminology as a single award alongside your A Levels.

T

## T Levels

New technical courses that have been developed with employers and are designed to provide you with the skills and knowledge you need to access further study and/or skilled employment.

An excellent alternative to A Levels and Apprenticeships that combines classroom study with on-the-job training as part of a substantial industry placement that will last at least 315 hours with an employer.

L1

L2

L3

## Technical and vocational courses (BTEC & UAL)

A perfect hands-on alternative to A Levels that allows you to focus on one subject. This option will suit anyone who enjoys practical lessons and likes a mixture of coursework and exams.

Career-focused courses allow you to focus on the subject you're most passionate about and develop the practical skills you need for your future career. Level 3 Career-focused course are valued the same as A Levels and often carry the same number of UCAS points - the only difference is the way in which they are studied. Courses are also available at Level 2 and Level 1.

### What is right for you

Check your predicted GCSE grades against our entry requirements in the course directory to find the level of study that's right for you.

### Need help deciding?

Our advisers offer free advice to help you make the right choice. Contact them on **01692 668080** or **pastoninfo@ccn.ac.uk**

# Progression routes

Whether it's university level study, or a career with amazing opportunities – our courses can help get you where you want to be.

## Progression routes at Paston College

### Level 1

Equivalent to studying at the level of GCSE grade D/3 or below. These courses will allow you to progress on to Level 2 study or an Apprenticeship.



### Level 2

Equivalent to studying at the level of GCSE grade C/4 or above. These courses will allow you to progress on to Level 3 study, employment or an Apprenticeship.



### A Level

Excellent progression to university, employment and Apprenticeships.

### T Level

Progress into skilled and technical employment or onto higher/degree Apprenticeships and university.

### Level 3

Valued equally to A Levels by universities\* and employers, these courses also offer excellent progression to university, employment and Apprenticeships.

\* Please note, this is not the case for some universities (e.g Oxford and Cambridge). If you have a specific course or university in mind, please check their specific entry requirements.

## New for 2025!

Alternative Academic Qualifications provide meaningful and practical learning experiences across a range of career sectors.

They will equip you with the applied knowledge, skills and personal attributes you need to enter and thrive in higher education or employment.





# Progression routes

Successful completion of your course at Paston College will open up a whole new world of possibilities for you to consider such as:

---



## Degree level study

Our A Level/Level 3 students regularly progress on to some of the country's top universities, colleges and drama schools including Oxbridge, Warwick and London Academy of Music & Dramatic Art (LAMDA). Students have also chosen to study degree level courses closer to home.

City College Norwich and Easton College have a wide range of Degree and Higher Education courses that provide you with the skills and experience needed to develop your career.

All courses have been designed with employers and progression in mind, giving you the skills and qualifications you need to gain employment or develop your career.

---

## Easton College

Specialist vocational Higher Education courses in subject areas such as Agricultural Management, Animal & Equine Science and Welfare, Crime, Terrorism and Global Security, Sport, Land Based Sciences, Policing, Wildlife & Conservation and Zoology.

Visit [easton.ac.uk/degrees](http://easton.ac.uk/degrees) to find out more.



## City College Norwich

Courses available in subject areas such as Childhood and Youth Studies, Leadership and Management, Additional Needs and Disabilities, Psychology with Sociology, Professional Aviation Engineering Practice, Health Studies, Engineering, Construction and the Built Environment and Sport, Health and Exercise. There is also a range of higher education courses available at City College Norwich.

Visit [ccn.ac.uk/degrees](https://ccn.ac.uk/degrees)



## Employment or Apprenticeships

Our students have progressed on to high level employment with companies such as the BBC and Rolls-Royce. Students have also progressed on to Higher or Degree Apprenticeships.

Apprenticeships provide fantastic career opportunities and allow you to get a qualification and earn money at the same time. City College Norwich and Easton College work with hundreds of employers to provide Apprenticeships and Degree Level Apprenticeships in a variety of specialisms.

Visit [ccn.ac.uk/apprenticeships](https://ccn.ac.uk/apprenticeships) or [easton.ac.uk/apprenticeships](https://easton.ac.uk/apprenticeships) to find out more.



# Student support

Our College has a variety of services to help you navigate your way through your studies at Paston College and beyond.





## Personal Tutor

All students have a personal tutor who will help you settle in and support you throughout your time at College. Tutors are a vital part of your College experience and you will see them both in group sessions and on a one to one basis. Their role is to support your progress towards your own personal targets, provide you with personal development opportunities and help you on your journey to university level study, Apprenticeships or employment.

.....

## Additional educational needs & disabilities

Paston College is passionate about supporting students with learning difficulties and/or disabilities. We offer a range of support services to help you while you are studying, whether you have any specialist needs, or you would just like some help with your work.

Visit [paston.ac.uk/additional-educational-needs](http://paston.ac.uk/additional-educational-needs) or contact [SEN@ccn.ac.uk](mailto:SEN@ccn.ac.uk) to find out what support is available.

.....

## Wellbeing

Our College provides a safe, positive and supportive environment for all students.

We ensure that all students feel valued and can learn and progress in a secure environment.

You can find out more about safeguarding and wellbeing at [ccn.ac.uk/wellbeing](http://ccn.ac.uk/wellbeing)

## The Study Skills Centre & Learning Support

Students who require additional support with their studies will find help in the Study Skills Centre. This is a quiet and supportive working environment where students can study alone, work within small groups or work one to one with a member of the Additional Support Team.

It is open during college hours and it is well equipped with computers, desks for group work and staff available to give advice and support to students. Additional support may be available to you for a short period of time or for the duration of your studies at college.

For students who require and receive a weekly one to one support session, a programme of study is agreed with targets set. These are reviewed at regular intervals and shared with teachers to ensure that the student is receiving the most appropriate help.



# The Advice Shop



We care about your future, that's why we have a friendly and professional advice team offering information and support on careers, finance, travel and more.

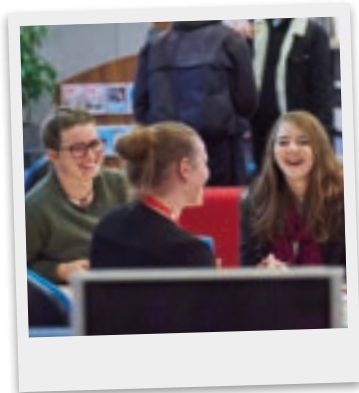
Our team are here to provide you with the support and advice you need to focus on your studies and make your time with us as enjoyable as possible.



Offers expert impartial advice and guidance for anyone considering their career, education and training options. This free service is available to both existing students and young people and adults across Norfolk.

Contact **01692 668 080** or  
**pastoninfo@ccn.ac.uk**

Visit: **[ccn.ac.uk/student-services](https://ccn.ac.uk/student-services)**



## Transport

Transport to Paston is both convenient and affordable with North Walsham being served by both bus routes and train services. The train station is just a short five minute walk from college and connects services from Norwich to Cromer, Sheringham and Runton on the coast.

Students can enjoy discounted travel from Norfolk County Council and Greater Anglia Rail services, saving you money travelling to and from the College. You can apply for these prior to enrolment.

See page 38 and 39 for more information.

Visit: **[paston.ac.uk/travel](https://paston.ac.uk/travel)**



## Finance

Student funding can seem a complicated and daunting subject and you may not be sure what you are entitled to. Our Student Finance Advisers can provide you with clear, accurate and confidential advice about bursaries and free college meals.

Visit: **[ccn.ac.uk/finance](https://ccn.ac.uk/finance)**  
Email **[financialadvice@ccn.ac.uk](mailto:financialadvice@ccn.ac.uk)**



## Careers

Our qualified advisers offer a range of careers services for students including one-to-one course and careers advice appointments and support in applying for higher education or university.



# English Language & Maths skills

English Language and Maths are the most fundamental skills a young person can have not just for work, but for life. In order to help you achieve success now, and in the future, we will ensure you continue to make progress with these skills throughout your programme of study.

Whatever grades you achieved in your GCSEs, your programme of study at Paston College will include opportunities for you to develop and enhance your English Language and Maths skills.

You will be supported to reach your full potential in classes that build on your prior attainment.

Use this guide to find out how Maths and English will be built in to your studies:

4

**I've achieved grade 4 and above in GCSE Maths and/or English Language**

You will continue to develop your skills as part of your chosen course(s).

1-3

**I've achieved grade 1-3 in GCSE Maths and/or English Language**

You will take either GCSE or Functional Skills in English Language and/or Maths.

0

**I don't have GCSE Maths and/or English Language**

You'll be enrolled on to a GCSE or Functional Skills programme at an appropriate level.

### GCSE English Language

English language and literacy are highly valued skills in both education and employment. It is about being able to effectively communicate, confidently articulate and express your thoughts, as well as actively listening and understanding other viewpoints. Therefore, they are an essential part of your programme of study and your future progression plans.

.....

### GCSE Maths

Maths and numeracy skills are a central part of your programme of study. It isn't just about knowing how to carry out calculations and getting the right answer; it is about improving your skills in recognising problems, finding possible solutions and communicating your reasoning. Therefore, they are an essential part of your future progression in education and employment.

.....

### Functional Skills English & Functional Skills Maths

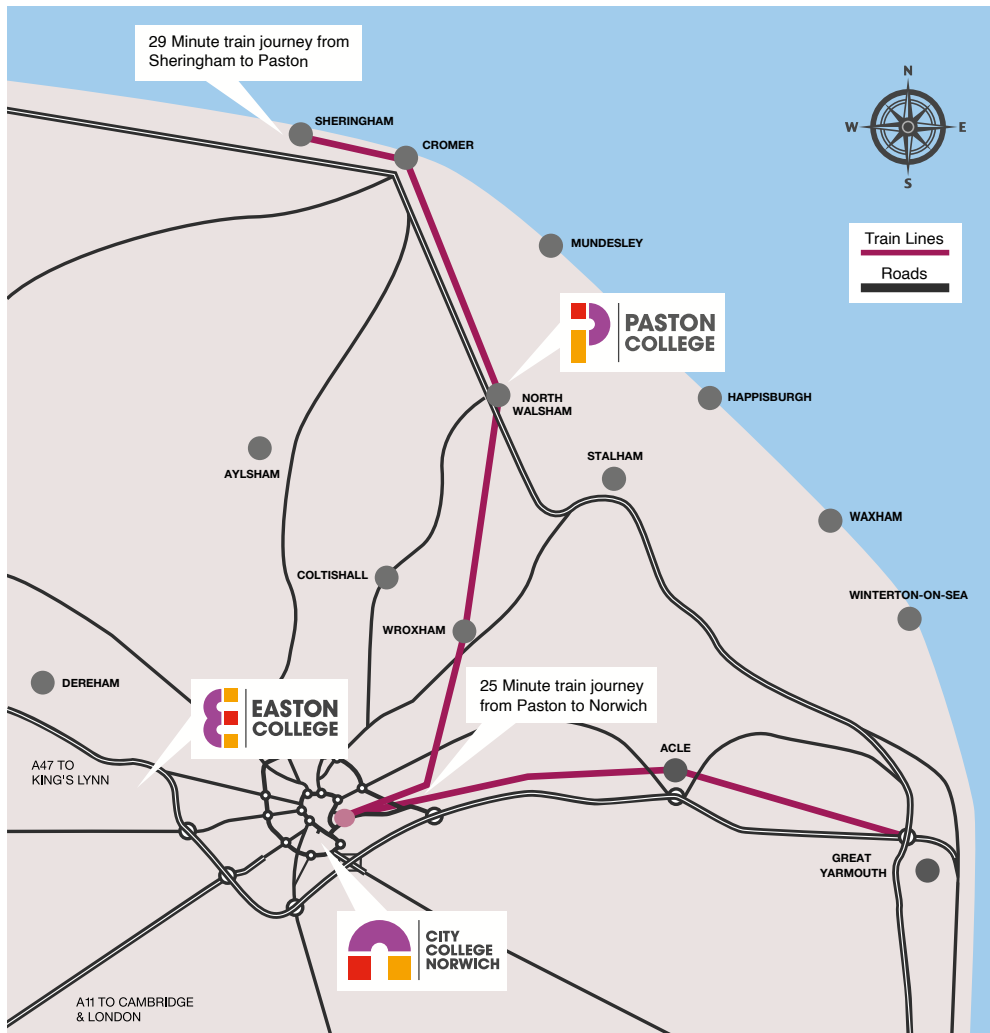
English Language and Maths are essential qualifications that give you a range of skills for life. If you have gaps in your subject knowledge that need further development before progressing to GCSEs, then Functional Skills courses are a great starting point. They focus on developing the core skills needed, as well as highlighting the relevance of English Language and Maths in real life situations.

These qualifications are available at different levels to support your skills development and understanding. They provide a secure foundation to aid progression within both education and employment.



**" I found English at school very challenging, dull and I dreaded every lesson. Thanks to my tutor and her teaching techniques - which must have been honed over years - I now have a real passion for the subject and a far greater respect for writers and the many 'tricks' they employ."**

# Travelling to College



**Location**

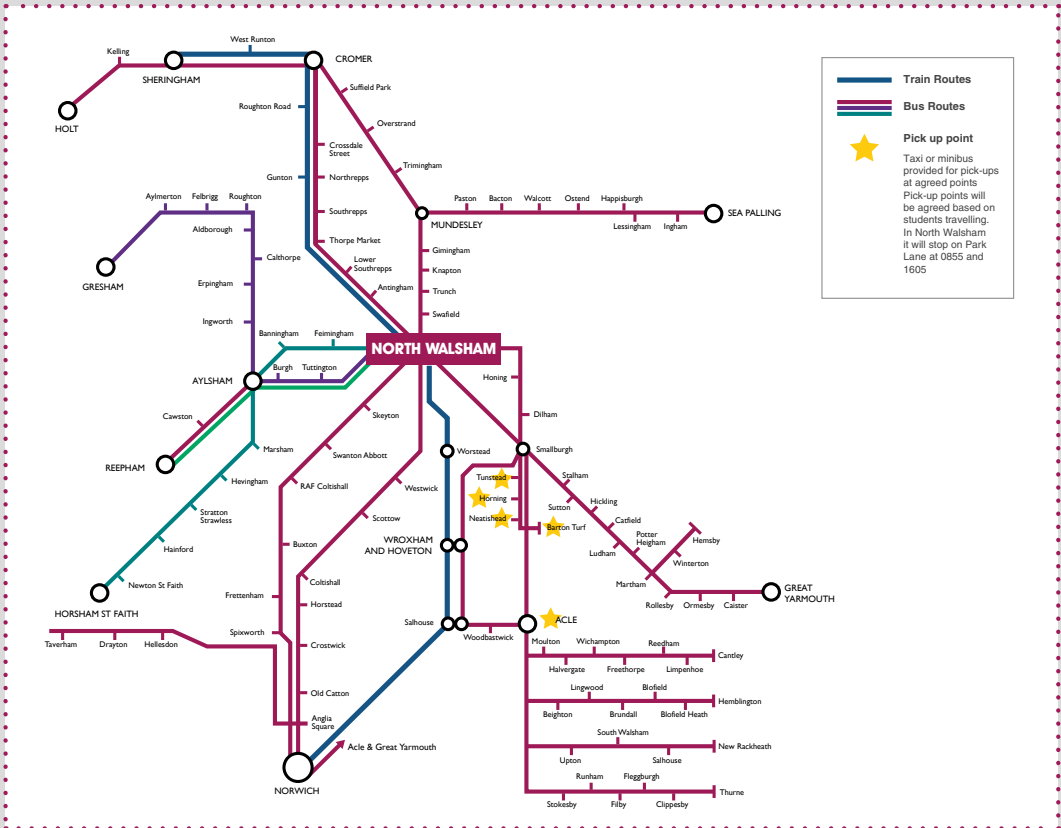
Paston College is located in the heart of North Walsham with two main campuses on Grammar School Road and Park Lane.

**Find out more...**

at [paston.ac.uk/support-and-advice/student-travel](http://paston.ac.uk/support-and-advice/student-travel)  
or contact our Student Transport Officer on [citytravel@ccn.ac.uk](mailto:citytravel@ccn.ac.uk)



# Transportation Map



Student Life

## Transportation routes to Paston College

### From Norwich

Exit Norwich via the B1150 to North Walsham. Continue through Coltishall remaining on the B1150. As you approach North Walsham pass under the railway bridge and continue ahead at the traffic lights onto Grammar School Road.

### For the Griffons (main visitor's reception)

Continue ahead at the mini roundabout, the entrance to Paston College can be found on the left hand side.

### For the Lawns

Turn left at the mini roundabout onto Park Lane, bear left and the entrance to Paston College can be found on the right hand side.

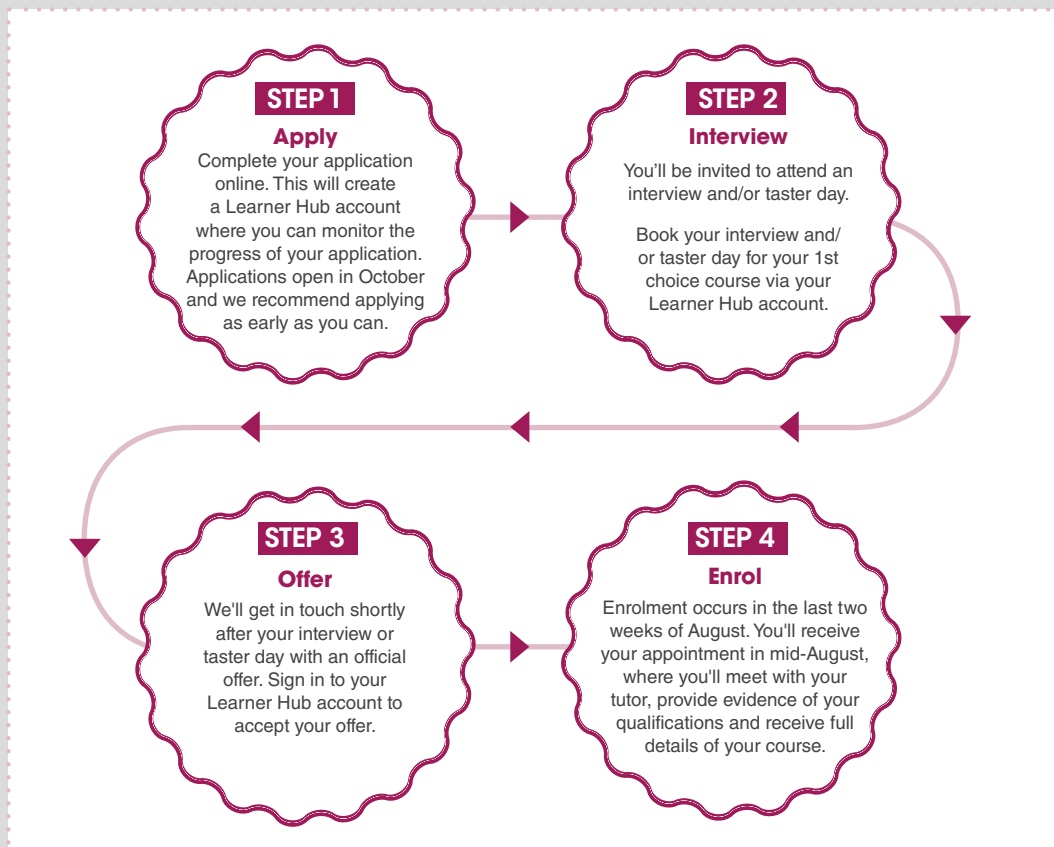
### From Cromer

Exit Cromer via the A149 towards North Walsham. Remain on the A149 for approx. 8 miles into North Walsham. Pass under the railway bridge and at the traffic lights turn right. At the next set of traffic lights turn left onto Grammar School Road.

# How to apply

## Got a question about your application?

Get in touch with our Admissions Team at Paston College via [admissions@paston.ac.uk](mailto:admissions@paston.ac.uk) or 01692 402 334



### Apply online

Visit [paston.ac.uk](http://paston.ac.uk)

### International students

If you have come to live in the UK from overseas and would like to study here, please contact our International Adviser at [international@ccn.ac.uk](mailto:international@ccn.ac.uk) or +44 (0)1603 773 798 for help and guidance on how to apply.

### Help you choose

If you are applying through "Help You Choose" via your school, you will be emailed a link to create your personal Learner Hub account.

Remember to keep your login details safe.

Please use this to monitor your application and book your interview and/or taster day.



**Intro Day**  
You will be invited to our  
Intro Day on Monday 30  
June 2025.





# Courses

---

Art & Design BTEC

Biology

Business

Chemistry

Computing

Criminology

Drama & Theatre Studies

Education & Early Years

English

Environmental Science

Fine Art

French

Geography

Graphic Communication

Health & Social Care

History

History of Art

Law

Maths

Media & Film Studies

Philosophy & Religion

Photography

Physical Education, Sport

Physics

Politics

Psychology

Sociology

Textile Design

Vocational Studies

Oxbridge & A+ Programmes

Leisure Learning

Inclusive Learning

Professional Development

Adult Essential Skills

City College Norwich

courses

Easton College courses

## Course essentials:



### Courses

#### Level 3

(Equivalent to 3 A Levels)

BTEC Art & Design



### Careers

#### Architect

£30-60K+ per year

#### Artist

Variable

#### Fashion Designer

£24-40K per year

#### Graphic Designer

£20-40K per year

#### Photographer

£17-45K per year

## Exhibit your work

Showcase your work in a wide range of settings, including at the Paston Art Show.

# Art & Design BTEC

**This course recognises that there is a common thread running through all aspects of art and design whether that is drawing and painting, graphics, photography or textiles. The course gives you the opportunity to expand your knowledge of these areas and give you the creative confidence to make bold and innovative work.**

## What is it about?

The course has been designed to help you become an independent, creative practitioner. The course will enable you to become confident using a variety of materials and processes including photography, both digital and darkroom, drawing, painting and 3-D construction, graphics and textiles. We observe the importance of sound technique and rigorous research methods and critical writing.

## What will I do?

In the first term you will do plenty of drawing, painting and 3D techniques. You will learn Photoshop and Illustrator and

a variety of textiles processes including screen-printing and sewing. You will practise adopting good research habits to help you construct your sketchbook effectively. We try to find a way of making art that is unique to you. There is also a written unit in Year 1, we help you write effectively using analytical language.

We invite past students and practising artists to talk to you and we encourage students to exhibit their work publicly. In 2024 BTEC students exhibited at Cromer Artspace and North Walsham market place.

You will also exhibit your work in the annual Paston Art Show in June each year and there are opportunities to go on trips abroad to Amsterdam and Berlin.

## Progression

Recent students have gone on to study the following courses at degree level: Animation, Fine Art, Film, Graphic Design, Architecture, Illustration, Printmaking, Art History.

## Is it suitable for me?

If you enjoy art and design, are looking to refine and expand your knowledge across the range of disciplines and work with a variety of materials and being part of a dynamic community of like-minded people then this course is for you!



# Art & Design BTEC

Art & Design BTEC

Level 3

1-2 Years

## Art & Design

### Entry requirements

Minimum of 5 4/C grades at GCSE or a Merit/Distinction in a relevant BTEC First Diploma (or equivalent) plus 1 4/C grade at GCSE. You must also have grade 4/C or above in GCSE Art & Design or Art related subject or Level 2 Diploma in Art & Design at Merit or above plus grade 4 or above GCSE English.

You will be asked to show a portfolio of varied and good quality work at interview.

You must also study English Language and/or Maths GCSE if you have not already achieved grade 4/C in these subjects.

### Course equivalent

This course is equivalent to three A Levels.

### What will I learn?

This course has been designed to provide you with the skills and knowledge to progress to degree level study in art and design or into your career.

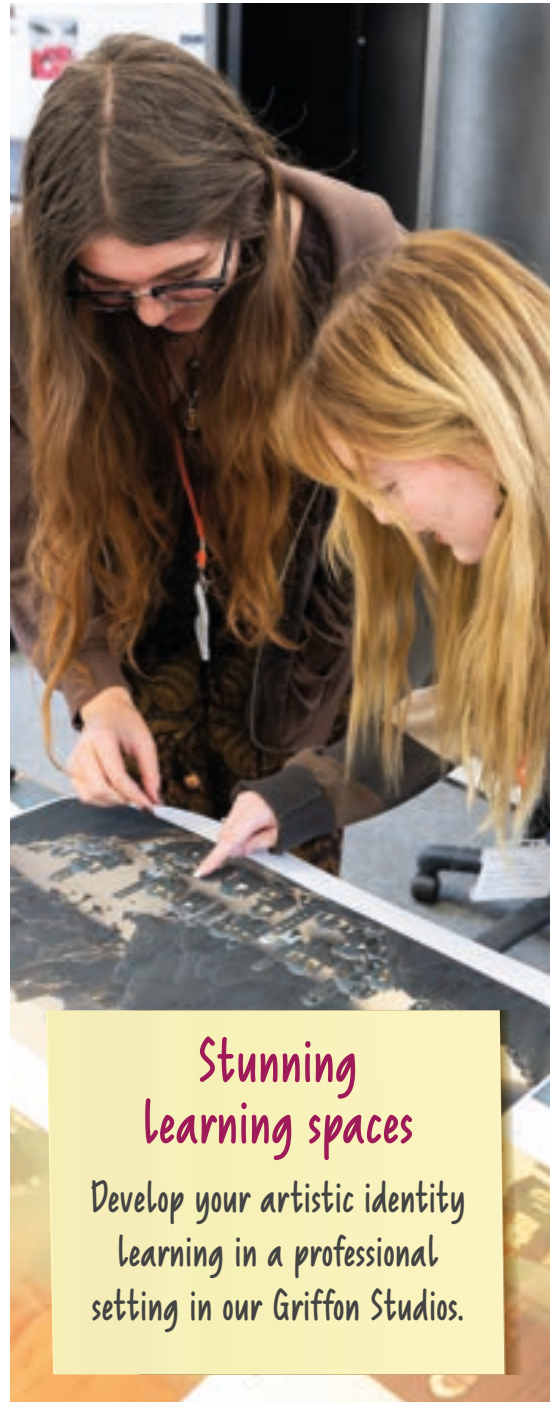
You will be introduced to a range of different artistic disciplines such as painting, printmaking, drawing, textiles, photography and graphic design. You will study thirteen units over the 2 years that have been designed to enable your development, understanding, awareness and application of visual language and communication.

### How am I assessed?

You will be assessed through 13 units that are internally and externally assessed.

### What next?

You can progress to degree level study at university and college. Previous students have gone on to establish careers within the creative industries.



Stunning  
learning spaces

Develop your artistic identity  
learning in a professional  
setting in our Griffon Studios.

## Course essentials:



### Courses

#### A Level

Biology



### Careers

#### Medical Professional

£50-150K per year

#### Veterinary Scientist

£35-78K per year

#### Forensic Scientist

£18-45K per year

#### Science Journalist

£18-30K per year

#### Accountant

£30-60K per year

#### Research Scientist

£27-48K per year

# Biology

**Biology engages and inspires students. The fundamentals of biology help you to understand contemporary issues, such as genetic modification, advances in drug therapy and climate change.**

## What is it about?

Between 'aardvark' and 'zorilla' (yes, there is such an animal!) there are about 30 million different kinds of living organism. Yet despite this incredible variety, many features of their structure and biochemistry are surprisingly similar. Biology seeks to define the fundamentals upon which all living organisms base their existence but and also to understand the pressures that give rise to a multitude of specialised forms.

## What will I do?

The course builds on the knowledge that you have from studying GCSE Science. Your teacher will recap the relevant part of the GCSE content before introducing new topics. There is a combination of taught lessons and practical work. The content will be challenging at times but will include recent research. You will apply your knowledge to new and interesting scenarios.

Practical work leads to a practical endorsement qualification and so is an important part of lessons.

There is a field trip to Winterton Dunes, a rare example of sand dune succession.

## Progression

Biology is a well-regarded qualification with many transferable skills. The course encourages you to analyse complex scientific information and make deductions. It involves problem solving. Your mathematical skills will improve. You can use A level biology and the skills you acquire as an entry into a variety of degree subjects, including courses like: BSc Animal Science or Zoology. You can also pursue apprenticeships or employment.

## Is it suitable for me?

If you look at world around you and wonder about the variety of life forms and how they have arisen then biology will answer some of these questions.

# Biology

## Biology A Level

A Level

2 Years

## Biology

### Entry requirements

Minimum of 2 6/B grades and 3 4/C grades at GCSE. You will also need grade 6/B or above in GCSE Biology or Additional Science and grade 5 or above in GCSE Maths.

*Please note, vocational subjects cannot replace GCSEs for entry to A Levels. You must also study English Language and/or Maths GCSE if you have not already achieved a minimum of grade 4/C in these subjects.*

### What will I learn?

A Level Biology builds on topics studied in GCSE triple or combined science and includes some new areas to learn about. In the first year you will explore key topics including cell structure, biological reactions, enzymes, and DNA. Other topics include biodiversity, immunity, and adaptations of different organisms for gas exchange and transport.

In the second year you will cover two key biochemical pathways: respiration and photosynthesis. These will help you to understand energy transfer in ecosystems and from there we consider ecology. You will also study reproduction which allows you to understand inheritance, evolution, and the production of new species; the role of hormones and the nervous system in homeostasis; and the use of gene technologies in forensics and crop improvement.

### How am I assessed?

There are three written examinations at the end of the course. Additionally, your practical work will be assessed leading to a practical endorsement qualification alongside your A Level grade.

### What next?

You can progress to a wide range of degree courses. Studying this subject can lead to careers in medicine, veterinary, forensic science, science journalism and ecology. You will develop transferable analytical and practical skills relevant for a variety of careers.





## Course essentials:



### Courses

#### A Level

Business

#### T Level Foundation Year

Business (level 2)

#### T Level

(Equivalent to 3 A Levels)

Management and Administration; Team Leadership and Management



### Careers

#### Business Support Officer

£23-25K per year

#### New Business Executive

£24-30K per year

#### Business Administrator

£24-28K per year

#### Accountant

£30-60K per year

#### Marketing Manager

£30-65K per year

## Run your own enterprise

Put your business skills to the test running your own mini enterprise at college.

# Business

**Interested in setting yourself up with a solid start for a career in business and finance, then our A Level or T Level courses are for you. Delivered by our expert teachers, these course will help you to develop your business knowledge and skills through in class learning as well as through visits and guest lectures with local/national organisations.**

### What is it about?

Our business courses will provide you with a wide range of theoretical and technical skills that can be utilised in a wide range of careers and industries. Careers could include management, marketing, finance/accounting, consultancy, and Human Resources. Industries from Retail, Finance, and Insurance, through to Farming and Agriculture.

### What will I do?

You will learn about financial performance, human resources, leadership, marketing, operations and managing strategic change through teacher led delivery, group activities and independent study.

You will gain an insight into the world of work and study business in a variety of contexts including small and large companies in the UK and globally, through engaging with a range of businesses through case studies, guest lectures and trips.

You'll learn about key elements and essential functions of business, to support you in the achievement of your qualification but also to help prepare for your progression into higher education, apprenticeship, or the workplace.

### Progression

Progression routes include a variety of degree level courses in areas such as but not limited to: Accountancy, Law, Business, Marketing, Human Resources, Event Planning and Management. You can pursue a degree in Leadership and Management at City College. You can also apply for and undertake an apprenticeship in a related field or start your career in the workplace in industries such as: Retail, Customer Service, Banking, Sales, Marketing or Administration.

### Is it suitable for me?

If you enjoy looking at the bigger picture, studying the business world in a more analytical sense and evaluating the impact of a business environment, whilst wanting to develop the practical and professional skills to support you in the workplace then these courses could be for you.



## Activities

You will be able to undertake a range of activities whilst undertaking the business courses, from taking part in work and industry placement, engaging with guest speakers, visiting businesses, and engaging with trips.

## Gain real experience of work

Work with businesses and employers and make connections.

## Student profile:

### William

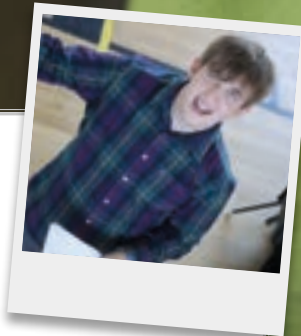
Studying:

**A Level Business**

What next:

**After college, I'm hoping to study a degree in Economics.**

"The support from my teacher has been invaluable, if I ever had any questions or concerns, I received the best possible advice and guidance. The teaching, and pattern of teaching, was done in such a way where there would be enough time for me to fully understand concepts before the lesson ended."



# Business

Business A Level / Business Level T Level Foundation

## Business

A Level

2 Years

### Entry requirements

Minimum of 2 6/B grades and 3 4/C grades at GCSE. You will also need grade 4/C or above in GCSE English Language. Grade 4/C or above in Maths would be an advantage.

*Please note, vocational subjects cannot replace GCSEs for entry to A Levels. You must also study English Language and/or Maths GCSE if you have not already achieved a minimum of grade 4/C in these subjects.*

### What will I learn?

You will explore business in a wide variety of contexts and learn about key elements and essential functions. This course will provide you with the skills to practically apply what you have learned, as well as learning from data and case studies.

You will look at how businesses make decisions, the competitive environment, external factors, how technology has changed the way businesses operate, and how statistical data and figures help businesses make decisions. You will learn about financial performance, human resources, leadership, marketing, operations, and managing strategic change.

### How am I assessed?

Assessment is by written exams, which take place at the end of the second year.

### What next?

You can go on to a variety of degree level courses in areas such as accountancy, business, marketing, human resources, event planning and management.

You can also progress on to apprenticeships or employment in areas such as retail, customer service, banking, sales, marketing and administration.

## Business

T Level Foundation

1 Year

### Entry requirements

Five GCSEs at grade 3/D or above including GCSE English Language or Maths at grade 4/C or above. You will also need to complete a successful interview.

If you have not achieved grades 4/C in GCSE English Language or GCSE Maths you will continue to study these qualifications alongside the T-Level Foundation year.

### Course equivalent

This course is equivalent to studying at the level of GCSE grade C/4 or above.

### What will I learn?

T Level Foundation provides skills and knowledge with a focus on the following core aspects:

- Knowledge and Skills for the Workplace
- Industry Relevant Technical Knowledge
- Skills for Successful Study
- English, Maths and Digital Skills
- Positive Attitudes and Behaviours.

### How am I assessed?

This T Level Foundation includes a Level 2 qualification that is internally assessed through written assignments and presentations as well as externally assessed awarding body exams. There will also be an assessed competency-based work placement.

### What next?

You can progress to our T Level Management and Administration: Team Leadership and Management or an Apprenticeship.

# Business

## Management & Administration T Level

### Management & Administration:

Team Leadership & Management

T Level

2 Years

#### Entry requirements

Five GCSEs grades 9-4 including English Language and Maths at minimum grade 4, and a successful interview. Or the successful completion of a Business Level 2 programme with a Merit grade or above with English Language and Maths GCSE 9-4, and successful interview.

#### Course equivalent

After successful completion of the second year, this course is equivalent to 3 A Levels.

#### What will I learn?

Our T Level Management and Administration Level 3 course will arm you with real-world experience and the core knowledge and skills needed to progress into the world of management. Your first year will include business context, people, finance, project management, change management, and business behaviour. In your second year, you will go on to specialise in team leadership and management and study leading, managing and developing teams and individuals, building relationships, operational management, decision making, project management and governance and compliance. Your course will include a 45 day industrial placement.

#### How am I assessed?

Assessment will take place through a combination of externally set exams, an employer-set project and endpoint synoptic assessment over the two years of the qualification.

#### What next?

You can progress to university study in courses as diverse as accountancy, law, business, marketing, human resources, event planning, and management.

You can also progress on to apprenticeships or employment in areas such as retail, customer service, banking, sales, marketing and administration.



### Employer links

T-Level students have the opportunity to work with SeaLife, John Lewis and AVIVA to develop their understanding of the world of work and gain valuable insight into the structure, functions and purpose of business and industry.

## Course essentials:



### Courses

#### A Level

Chemistry



### Careers

#### Chemist

£26-40K per year

#### Materials Scientist

£20-45K per year

#### Chemical Engineer

£30-65K per year

#### Vet

£30-50K per year

#### Dentist

£34-96K per year

# Chemistry

**Chemistry looks at how and why substances react together and the use that can be made of this to enhance our lives - from fighting disease to conducting electricity. It is a core science subject that requires descriptive and analytical skills. This two year course gives you an excellent grounding in the three main areas of chemistry: physical chemistry, organic chemistry and inorganic chemistry.**

## What is it about?

Physical chemistry includes topics like atomic structure, rates of reaction, chemical equilibria and redox reactions. Organic chemistry looks at the chemistry of most molecules containing carbon atoms, which suddenly becomes much wider and more interesting than that covered at high school - we look at the reactions of a range of 'functional groups' and learn how to describe reactions in terms of electron movement. Inorganic chemistry studies the properties and reactions of the rest of the elements and their compounds; we look at the chemistry of group 2, group 7 and the transition metals as well as general themes of repeating patterns and trends in the periodic table.

Learning how to do a variety of chemical calculations is also a substantial part of the course.

## What will I do?

A lot of classroom based work which you will need to back up with rigorous independent study to rehearse and reinforce the knowledge and skills covered. Some topics involve more practical work than others and experiments are a key part of the course; there are important skills and competencies you will develop to make you a more proficient practical chemist.

## Progression

Chemistry A Level is a very highly valued qualification – success demonstrates skill in a variety of thinking and 'doing' skills. As such it is a good foundation for employment, university or an apprenticeship. It very readily leads, when studied alongside other sciences and/or maths, to degree level study in related science or engineering subjects as well as being a key requirement for medicine, dentistry and veterinary science.

## Is it suitable for me?

If you enjoyed Chemistry at school and are keen to work hard to develop a deeper understanding of 'how' and 'why' across a wider range of chemistry topics – yes!



# Chemistry

## Chemistry A Level

### Chemistry

A Level

2 Years

#### Entry requirements

Minimum of 2 6/B grades and 3 4/C grades at GCSE. You will also need grade 6/B or above in GCSE Chemistry or Additional Science and grade 5 or above in GCSE Maths. We recommend you take this subject alongside at least one of the following A Level subjects: Biology, Maths and Physics.

*Please note, vocational subjects cannot replace GCSEs for entry to A Levels. You must also study English Language and/or Maths GCSE if you have not already achieved a minimum of grade 4/C in these subjects.*

#### What will I learn?

During your first year, you will study a variety of topics including atomic structure, oxidation and reduction, patterns and trends in the periodic table and organic chemistry.

The second year builds on your knowledge, covering topics such as equilibria in the gas phase, reaction rates and the fundamental laws of energy change. You will develop key skills, such as understanding abstract ideas, making connections between different concepts and solving problems.

#### How am I assessed?

There are three written examinations at the end of the course. Additionally, your practical work will be assessed leading to a practical endorsement qualification alongside your A Level grade.

#### What next?

You can progress to study chemistry, medicine, veterinary science, dentistry or pharmacy at university. Chemistry is also extremely useful for the biological sciences and an excellent preparation for an extensive range of scientific and non-science careers.



## Course essentials:



### Courses

#### Level 3

(Equivalent to 3 A Levels)

Computing



### Careers

#### Computer Games Developer

£25-70K per year

#### Network Technician

£25-50K per year

#### Social Media Manager

£25-60K per year

#### Software Developer

£26-70K per year

#### Web Developer

£20-60K per year

## Excellent career prospects

The UK is a global tech powerhouse with over 2.9m jobs, £10bn investment in 2019 and a growth of 44% in the past 8 years.

# Computing

The world of information technology is ever evolving and moves at breakneck speed. That's why we've crafted and developed our courses with the help of experts in the field.

Our courses are designed to deliver what employers need, reflecting the latest in technology and giving you the skills and qualifications needed for your future career in the industry.

### What is it about?

You will learn both theoretical and practical aspects of computer science with units covering a range of topics including the planning and management of computing projects, software design, IT system security and encryption and app development.

### What will I do?

You will combine theoretical and practical learning of computer science to learn how computers work and gain up-to-date knowledge and IT skills.

You will learn about hardware and software, IT security and use your creative skills to create websites and write computer games.

### Progression

You could progress onto degree level courses at university or college.

You can also do an apprenticeship or go into employment in a variety of roles including web development, games programming, online marketing, digital media and games production.

### Is it suitable for me?

If you're interested in IT and computer science and want to develop your skills in a practical way with a view to progressing to higher level study or employment, this course could be for you.

### Enrichment opportunities

You will have the opportunity to write software, as well as working with a specialist to build your own computer network.

# Computing

## Computing Level 3

### Computing

Level 3

2 Years

#### Entry requirements

Minimum of 5 4/C grades at GCSE, one of which must be GCSE Maths or a Merit/Distinction in a relevant BTEC First Diploma (or equivalent) plus a 4/C grade in GCSE Maths. You must also study English Language alongside if you have not already achieved a grade 4/C.

#### What will I learn?

You will learn both theoretical and practical aspects of computer science with units covering a range of topics including the planning and management of computing projects, software design, IT system security and encryption and business applications of social media.

You will also have the opportunity to explore units such as programming, computer games development and computer networking.

#### How am I assessed?

You will be assessed both internally and externally. The internal assessments are mostly written reports with four units being external exams or controlled assessments.

#### What next?

You can progress to degree level study or employment within the industry. This course will provide you with a broad base of knowledge of the computing sector, providing you with a solid foundation on which to progress.

#### Course equivalent

This course is equivalent to three A Levels.



### Write your own software

You will have the opportunity to write software, as well as working with a specialist to build your own computer network.

## Course essentials:



### Courses

#### Level 3

Criminology

(Equivalent to 1 A Level and can only be taken alongside other A Levels)



### Careers

#### Scenes of

##### Crime Officer

£16-37k per year

##### Police Officer

£29-46k per year

##### Prison Officer

£30-38k per year

##### Probation Officer

£24-29k per year

# Criminology

**Why do some people choose to break the law? Are you fascinated by serial killers? How is a crime scene processed and who is responsible for seeing a case through to court? Does the prison system intrigue you? Have you ever considered why some crimes go unreported? Studying criminology will help you to investigate all these questions and more.**

## What is it about?

Criminology is the study of crime and criminal behaviour. It considers the reasons behind why crime is committed, how it can be prevented and society's response to crime and criminals. It draws on elements from psychology, biology, law, and sociology. From designing a campaign around under reported crime to evaluating the prison system, you will gain a thorough understanding of crime through a variety of teaching and assessment methods.

## What will I do?

You will cover 4 units; each worth 25% of your overall mark. Unit 1 Changing Awareness of Crime – here you will demonstrate

your understanding of different types of crime, influences on perceptions of crime and why some crimes are unreported. Unit 2 Criminological Theories – you will gain an understanding of why people commit crime. Unit 3 Crime Scene to Courtroom – this will provide you with an understanding of the criminal justice system from the moment a crime has been identified to the verdict. Unit 4 Crime and Punishment – you will use your learnt skills to apply your understanding to evaluate the effectiveness of social control as a means to deliver criminal justice policy.

## Progression

This course develops a range of skills. Many students progress on to university to study a wide variety of courses - Criminology, Law, Politics and Social Sciences. Alternatively, progression into apprenticeships or employment is supported by the vocational elements of this course.

## Is it suitable for me?

If you are interested in finding out the reasons behind criminal activity, want to know more about the processing of a crime scene and love watching crime documentaries then this is the course for you!

## Enrichment opportunities

The course allows for a range of guest speakers from the Police, Prison Services and Forensics. We are planning a trip abroad next year.



# Criminology

## Criminology Level 3

### Criminology

Level 3

2 Years

#### Entry requirements

Minimum of 2 6/B grades and 3 4/C grades at GCSE. You will also need grade 4/C or above in GCSE English Language.

*Please note, this course can only be taken alongside other A Levels and is equivalent to one A Level. You must also study English Language and/or Maths GCSE if you have not already achieved grade 4/C in these subjects.*

#### What will I learn?

This course is designed to support your progression to university or the world of work/apprenticeships and features exciting and interesting experiences that allow you to gain in-depth knowledge and understanding of authentic case studies.

You will cover a range of topics including the changing awareness of crime, criminological theories, crime scene to courtroom and crime and punishment. The course will provide you with the ability to work alongside other professionals in a professional environment as well as helping you to develop a range of transferable skills.

#### How am I assessed?

You will be assessed through two internally marked controlled assessments (8 hours computer-based work where you have access to your notes) and two externally marked 90-minute exams. These are spread over the two years and take place at the end of each unit. Each assessment is worth 25% of the overall grade.

#### What next?

You can progress to university to study subjects such as criminology, psychology, law, forensics, education or sociology. This course also allows you to gain the required understanding and skills to be able to consider employment or apprenticeships within areas of the criminal justice system, council and legal services.



## Course essentials:



### Courses

#### A Level

Drama & Theatre Studies



### Careers

#### Actor/Dancer /Musician

Variable

#### Choreographer

Variable

#### Screenwriter

Variable

#### Stage Manager

£25-48K per year

## Take to the stage

Hone your skills performing in our purpose-built 150 seat Griffon Theatre as part of our theatre company, FarEast.

# Drama & Theatre Studies

**Develop your expressive and performance skills with a drama and theatre studies Course A Level taught in our stunning Griffon Theatre.**

### What is it about?

From our specialist teaching staff, to performing in our 150 seat Griffon Theatre, our courses will provide you with the skills and knowledge required to make an impact in the industry.

### What will I do?

You will be engaged in a comprehensive and dynamic programme of workshops, trips, skills building and theory, to develop your confidence in the key principles of performance, audience engagement, production and performance skills.

### Progression

A Level students can progress to degree level study at university. Our students progress to some of the most sought-after courses in the country including Bristol Old Vic Theatre School, Royal Central, London Academy of Dramatic Art (L.A.M.D.A).

You can go into a wide range of roles in the performance industry as well as careers in teaching, journalism, TV and radio.

### Is it suitable for me?

If you're looking for a course that allows you to develop self-confidence, work creatively with others to meet deadlines, solve problems and improve your attention to detail and analytical and conceptual skills, then these courses could be for you.

### Enrichment opportunities

You'll gain real experience of work through our close links with local theatre companies and industry professionals.



### Far East Theatre Company:

Far East Theatre is Paston's celebrated student theatre company. It's been running for 40 years and has, in that time, staged almost a hundred productions, involving more than a thousand students who have done everything from Shakespeare to work by key contemporary playwrights like James Graham and Bryony Lavery, via wholly devised projects and musicals. We've gone on county-wide tours with our work and taken productions to the Edinburgh Fringe Festival. Far East is open to all Paston students, whether you're on a drama course or not. We need actors and acrobats, dancers and designers, stage-managers and singers, technicians and tumblers, mimes and musicians to stage two exciting productions each year.

# Drama & Theatre Studies

Drama & Theatre Studies A Level

## Drama & Theatre Studies

A Level

2 Years

### Entry requirements

Minimum of 2 6/B grades and 3 4/C grades at GCSE. You will also need grade 4/C or above in GCSE English Language.

*Please note, vocational subjects cannot replace GCSEs for entry to A Levels. You must also study English Language and/or Maths GCSE if you have not already achieved a minimum of grade 4/C in these subjects.*

### What will I learn?

You will explore a variety of topics, focusing on a range of modern and classical texts and plays such as Steven Berkoff's *Metamorphosis* and Dario Fo's *Accidental Death of an Anarchist*.

You will learn techniques to help further enhance your performance skills and will take part in a range of live performances throughout the year.

### How am I assessed?

You will be assessed through written coursework, a written exam and a range of monologue, duologue and group performances.

### What next?

You can go on to study at a wide range of universities such as Leeds, Kent, Hull, Lancaster, Warwick and Bath Spa. You could also look to train at drama schools such as East 15, London Academy of Music & Dramatic Art (LAMDA) and Rose Bruford to study acting, musical theatre or stage management courses.

Well regarded by many employers and a good subject for careers involving contact with people such as teaching, journalism, TV, radio and performance. Former students have achieved places in the National Youth Theatre and Youth Music Theatre UK.







## Learn from industry experts

You will be taught by industry expert teachers and attend workshops run by professionals in the industry.



## Course essentials:



### Courses

#### T Level

Education & Early Years



### Careers

#### Early Years Teacher

£30-47K+ per year

#### Nursery Worker

£14-23K+ per year

#### Play Specialist

£12-30K per year

#### Teacher

£30-44K per year

## Large industry

There are over 72,000 providers and over 363,000 staff in the education and early years sector.

## Facilities

Adapted classrooms and interactive resources.  
Work placements in high performing schools and nurseries throughout the local area and close to your home.

# Education & Early Years

If you're looking to start a career in an exciting and rewarding profession that allows you to make a real difference to the lives of children in your care, our childcare and early years courses could be for you.

## What is it about?

Whether you would like to work in a children's centre, nursery school, reception class in a primary school or as registered childminder, our courses are designed to give you the knowledge and practical skills required to pursue a career in one of these invaluable vocations.

## What will I do?

You will focus on a variety of topics including child development, health and wellbeing, play and learning and literacy and numeracy. You'll develop your own independence and gain practical experience needed in the workplace. You will also work to professional standards which will help you gain employment or progress to degree level study at the end of your course.

## Industry placement

Every T Level includes Industry Placement that lasts at least 45 days, much more valuable than traditional work experience. You will get direct experience in an early years setting where you will learn new skills and build a practical appreciation of child development.

## Progression

Our courses provide you with core knowledge and practical skills leading to a variety of exciting destinations. These include university level study, with a range of Education degrees at the College. Apprenticeship or employment is also an option with Job opportunities in pre-schools, day nurseries or primary schools.

## Is it suitable for me?

These courses are suitable for you if you are practical, creative, flexible, compassionate, resilient, adaptive and enjoy working with children and young people.

## Enrichment opportunities

Through our industry links, you will have the opportunity to complete work placements in childcare settings. This will allow you to develop your confidence, self-esteem, and practical skills in a range of environments.

# Education & Early Years

Education & Early Years T Level

## Education & Early Years

T Level

2 Years

### Entry requirements

5 GCSEs grade 4 or above, including English Language at grade 5 or above

Successful completion of a Disclosure Barring Service (DBS) check

### Course equivalent

This course is equivalent to three A Levels.

### What will I learn?

You will build the knowledge and skills needed to work with children during this critical stage of their development. This course includes a minimum 45 days placement in a setting.

Core knowledge and understanding includes behaviour, child development, equality and diversity working with parents, families and carers, safeguarding, health and safety and wellbeing.

Occupational specialisms include children's play, development and early education; relationships to facilitate development; care, play and educational opportunities; safeguarding health, safety and wellbeing; and working in partnership with colleagues, parents, carers and other professionals.

### How am I assessed?

Students will be assessed by an external examination, an employer-set project and synoptic practical assignments.

### What next?

You could progress onto a degree level course at university or college, or directly to employment within the sector.



**Gain real  
experience of work**

*Work with childcare employers  
developing your skills in  
a professional setting.*



## Course essentials:



### Courses

#### A Level

English Literature  
English Language  
& Literature



### Careers

#### Advertising Copywriter

£20-80K per year

#### Higher Education Lecturer

£33-55K per year

#### Journalist

£14-50K per year

#### Public Relations Officer

£22-40K per year

#### Teacher

£30-44K per year

# English

**The ancient Greeks started talking about literature two millennia ago and people have not stopped since, so, if you want to be part of one the longest conversations in history, A Level English could be an ideal choice.**

### What is it about?

You get to learn a wide range of essential skills and deal with all kinds of important stuff; one of our former students says that English at Paston 'gets you to explore what you haven't thought to explore and gives you a platform of discovery into the ways of the world.' But we never lose sight of the fact that studying English is incredible fun. You will have amazing conversations, be taught by expert and encouraging teachers, and have the enduring pleasure of reading novels, plays and poems which will stay with you for the rest of your life.

### What will I do?

Our experienced English department offers two exciting and varied courses: English Language and Literature, and English Literature. The question applicants often ask is: what is the difference between the two?

It might be easiest to say that the English Literature course is the slightly more traditional: you study

poems, plays and novels by writers you may have heard of. However, the texts you study are infinitely more diverse than you may have been used to at GCSE and there is far more space for you to develop your own ideas and to think independently about the things you read.

English Language and Literature, however, challenges the whole concept of 'literature.' The course starts with the idea that Elizabethan sonnets or Jane Austen's fiction are as linguistically interesting as graphic novels, messages on Twitter, or adverts (and can be analysed in similar ways). Its approach is more scientific and involves learning some linguistic concepts to discuss a variety of texts.

### Progression

Both of our courses are an excellent grounding for undergraduate study and are seen as a strong component of any university or job application because you learn attention to detail, develop analytical and conceptual skills, and improve the clarity and coherence of your own writing and speaking. Former students now work as journalists, actors, teachers, scriptwriters, speech therapists, university academics, police officers, in IT, PR and retail, or are undertaking further study.

### Is it suitable for me?

Constantly fascinated with the world around you and the biggest of big questions? An interest in how those big questions are represented in language is a big part of studying English but please don't think this course is only for people who've read loads of books.





## Far East Theatre Company:

Far East Theatre is Paston's celebrated student theatre company. It's been running for 40 years and has, in that time, staged almost a hundred productions, involving more than a thousand students who have done everything from Shakespeare to work by key contemporary playwrights like James Graham and Bryony Lavery, via wholly devised projects and musicals. We've gone on county-wide tours with our work and taken productions to the Edinburgh Fringe Festival. Far East is open to all Paston students, whether you're on a drama course or not. We need actors and acrobats, dancers and designers, stage-managers and singers, technicians and tumblers, mimes and musicians to stage two exciting productions each year.

# English

English Language & Literature A Level / English Literature A Level

## English Language & Literature

A Level

2 Years

### Entry requirements

You will need a minimum of 2 6/B grades and 3 4/C grades at GCSE, which must include English Language. We do advise taking English alongside at least one other subject which involves extended writing.

*This subject cannot be taken with English Literature.*

### What will I learn?

You will initially learn the textual analysis skills which underpin the whole two year course, exploring concepts such as lexical choices, grammar, syntax and phonology. We'll use all sorts of texts to do this: poetry, novels, drama, music, adverts and videos!

You'll then have the skills to analyse texts including; *Truman Capote's In Cold Blood, Diane Samuels' Kindertransport, Shakespeare's Much Ado about Nothing, Alice Walker's The Color Purple.*

In the non-exam assessment unit, you will study the ever-popular Gothic genre. We'll read *Frankenstein* together and you then get to choose from a great range of texts for your second novel, including *Wuthering Heights, Dracula and the short stories of Angela Carter.* You also get the chance to write two pieces of Gothic creative writing.

### How am I assessed?

You will sit three exams, all two hours in length. Your non-exam assessment is worth 20% of your final A Level.

### What next?

You can progress to a range of English based degree courses and careers including creative writing, journalism, screenwriting, teaching and speech therapy.

## English Literature

A Level

2 Years

### Entry requirements

You will need a minimum of 2 6/B grades and 3 4/C grades at GCSE, which must include English Language. We do advise taking English alongside at least one other subject which involves extended writing.

*This subject cannot be taken with English Language and Literature.*

### What will I learn?

By reading and discussing some fantastic poems, novels and plays, you will learn the skills of close textual analysis, how to use evidence to support and develop arguments, and how to express ideas clearly and accurately.

You study a wonderful range of established texts (*Shakespeare's King Lear, John Webster's The Duchess of Malfi, and poetry by Christina Rossetti*) alongside celebrated and challenging contemporary writers like Mohsin Hamid and Jhumpa Lahiri.

The non-exam assessment gives you the opportunity to pursue your own literary interests. Recent students have written about the poetry of Eavan Boland, plays by Caryl Churchill and Shelagh Delaney, and prose fiction by Zadie Smith, Hanif Kureishi, Sally Rooney, Bernadine Evaristo and Angela Carter.

### How am I assessed?

You will sit two exams, both 2 ½ hours in length and each worth 40% of your overall mark. Your non-exam assessment makes up the other 20%.

### What next?

You can progress to a range of English based degree courses and careers including creative writing, journalism, screenwriting, teaching and speech therapy.

## Be inspired with trips and visits

Broaden your horizons visiting theatres, galleries and exhibitions in the UK and abroad. Recent theatre trips have included productions of *The Woman in Black* and *Much Ado about Nothing*

### Student profile:

#### Elise

Studied: **A Level English Literature**

Currently: **BA (Hons) English at Durham University**

"English Lit at Paston was the highlight of my college experience. The lessons introduce you to different ways of viewing texts, and are also really confidence-building. It opened me up to types of literature I hadn't encountered in my reading, but more importantly made me realise my passion for the subject and gave me the tools to explore it at degree level too."

## Course essentials:



### Courses

#### A Level

Environmental Science



### Careers

#### Wildlife & Landscape Conservation

£20-25K+ per year

#### Environmental Law

£50-78K+ per year

#### Hydrologist

£28-45K+ per year

#### Environmental Education Officer

£18-30K+ per year

#### Sustainability Consultant

£25-50K+ per year

# Environmental Science

**In the book "There is no Planet B" Mike Berners-Lee suggests ways we can help humanity thrive on this our only planet. Environmental Science is the study of how Earth and human society interact, so we can learn to make better decisions about how we manage our valuable resources to protect our Planet A!**

## What is it about?

You will explore a wide range of environmental issues from climate change to the ozone layer, from agriculture to aquaculture, energy and pollution through to conservation for biodiversity. Environmental Science seeks to understand the potential impacts of exploiting our environment, but then to show us how society can continue to thrive in a more sustainable way.

## What will I do?

In class you will learn about different parts of the world and the environmental issues facing them.

You will take part in debates, build on GCSE skills and learn how to undertake scientific research through laboratory experiments and fieldwork. You will learn how to complete independent research and develop extended writing skills so you can evaluate the impact of human activity on the planet. You will become skilled in numerical analysis of evidence regarding environmental change.

## Progression

This course is suitable for students who post-18 are looking to go into work, university or an apprenticeship. You may want to progress onto a Wildlife and Conservation degree at City College Norwich. Students have previously progressed onto university courses ranging from Natural Sciences and Conservation to Photography and English and degree level apprenticeships in engineering.

## Is it suitable for me?

If you are passionate about conservation and sustainability issues, enjoy science and maths skills to solve problems as well as extended writing, then this is a good course for you.



# Environmental Science

Environmental Science A Level

## Environmental Science

A Level

2 Years

### Entry requirements

Minimum of 2 6/B grades and 3 4/C grades at GCSE. You will also need grade 5 or above in GCSE Biology, Chemistry or Additional Science and grade 5 or above in GCSE Maths.

*Please note, vocational subjects cannot replace GCSEs for entry to A Levels. You must also study English Language and/or Maths GCSE if you have not already achieved a minimum of grade 4/C in these subjects.*

### What will I learn?

You will spend the first year studying topics related to living and physical environments. These topics allow you to explore why life exists on earth and develop a deep understanding of biodiversity and ecosystems such as grasslands and coral reefs and the conservation of these habitats. You will also study the impact that humans have on the atmosphere.

In the second year, you will learn about the challenges that the Earth's growing population has created. You will examine how we can balance the needs of people for minerals, fuel and food with the environmental impact this creates. You will discover how technological developments can help humans continue to exploit resources but in a more sustainable way.

### How am I assessed?

You will be assessed through two 3 hour exams.

### What next?

This subject is well respected by universities and you can go on to study a wide variety of science or social science courses. You can also progress on to a wide range of careers such as agriculture, economics, environmental law, conservation or environmental management.



## Course essentials:



### Courses

#### A Level

Fine Art

BTEC Art & Design

(an element within this course)



### Careers

#### Architect

£30-60K+ per year

#### Artist

Variable

#### Fashion Designer

£24-40K per year

#### Graphic Designer

£20-40K per year

#### Photographer

£17-45K per year

# Fine Art

If you enjoy making and thinking about art, going on gallery trips and exhibiting your work then this course is for you.

## What is it about?

The course has been designed to help you become an independent, creative practitioner. The course carries some respect for the traditions within Fine Art. We observe the importance of sound technique and rigorous research methods and critical writing. We also recognise the need to locate what we do, and encourage you to do, within a contemporary art context.

## What will I do?

The first term is about getting the basics right. That means plenty of drawing, painting and 3D techniques. It is also about getting good research habits in place, helping you construct your sketchbook effectively. We discuss art and try to find a way of making art that is unique to you.

You will exhibit your work in the annual Paston Art Show in June each year and there are opportunities to go on trips abroad to Amsterdam and Berlin.

## Progression

Recent students have gone on to study the following courses at degree level: Animation, Fine Art, Film, Graphic Design, Architecture, Illustration, Printmaking, Art History.

## Is it suitable for me?

If you enjoy art and design, being creative, working with a variety of materials and being part of a dynamic community of like-minded people then this course is for you!



## Student profile: Tahsin

Studied:

**A Level Fine Art**

What next:

**I plan to study Animation either at UWE Bristol or University of the Arts London.**

"I knew I wanted to pursue a career in art. The trip to Amsterdam has been the highlight but on a day to day basis you get to discuss art in complex and interesting ways. You are treated as an individual and encouraged to develop your own language."

# Fine Art

Art & Design – Fine Art A Level

## Art & Design – Fine Art

A Level

2 Years

### Entry requirements

Minimum of 2 6/B grades and 3 4/C grades at GCSE. You will also need grade 4/C or above in GCSE Art. If you did not take GCSE Art, you must have a portfolio approved at interview.

*Please note, vocational subjects cannot replace GCSEs for entry to A Levels. You must also study English Language and/or Maths GCSE if you have not already achieved a minimum of grade 4/C in these subjects.*

### What will I learn?

You will develop key skills through research and experimentation, encouraging you to reflect upon and question how to think about and make art.

You will explore painting, printmaking, sculpture, and experimental image making, using non art materials and research into the work of artists. You will be taught core fine art skills including varied drawing techniques and receive encouragement and support to develop your own areas of interest.

### How am I assessed?

**Component 1:** Personal Investigation. 60% of total qualification.

**Component 2:** Externally Set Assignment. 40% of total qualification that includes preparatory studies and the 15 hour task to complete work under exam conditions.

### What next?

The majority of students go to university or art school all over the UK to continue their studies. A number of students choose to study locally and benefit from our progression accord with Norwich University for the Arts.



## Course essentials:



### Courses

#### A Level

French



### Careers

#### Bilingual Secretary

£18-35K per year

#### Interpreter

Variable

#### Teacher

£30-44K per year

#### Translator

Variable

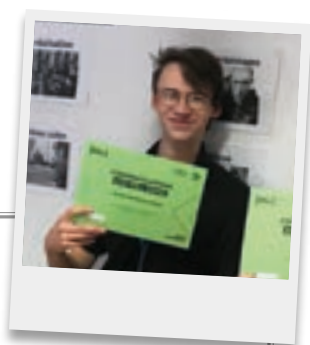
# French

**Studying a language beyond GCSE is an excellent way to develop your communication skills.**

**A Level language qualifications are very well regarded by both universities and employers and will look great on your CV.**

### What is it about?

Our expert teaching staff will support and encourage you to develop key linguistic skills. You will develop your speaking, listening, reading and writing skills.



## Student profile:

### Elijah

Now studying: **French and Japanese at UEA**

“Over the course of my French A level, I was introduced to a great many works of art which have since become some of my all-time favourites, such as the film *La Haine*. I also got to choose what I researched for my oral exam, not to mention learning vocabulary and grammar which have stood me in good stead in the intellectual gym that is a French bachelor's degree.”

*Photo of Elijah after completing a 10 week intensive language sessions with the UEA outreach programme, Make it Count.*

### What will I do?

Language lessons are lively, full of variety and classes quickly develop a friendly atmosphere and strong sense of identity. You will develop your speaking, listening, reading and writing skills through a range of learning activities both in and outside of the classroom. You will also explore a variety of cultures, enabling you to appreciate diversity and difference.

### Progression

You can progress to degree level study at university. Recently, our students have gained places at Oxford, Cambridge, Bristol, Nottingham, London and UEA.

### Is it suitable for me?

If you enjoy learning languages and would like to develop your skills to a higher level, French could be the ideal choice for you. After university our students have entered a range of careers including law, education and business.

### Enrichment opportunities

There will be an opportunity to visit France and to work with the Language Mentors from Cambridge University

You will also have the opportunity to attend a range of events outside college including a Modern Languages Summer School at UEA and taster sessions for languages in Cambridge.



# French

## French A Level

A Level

2 Years

## French

### Entry requirements

Minimum of 2 6/B grades and 3 4/C grades at GCSE. You will also need grade 6/B or above in GCSE French and 5 C/B or above in GCSE English Language.

*Please note, vocational subjects cannot replace GCSEs for entry to A Levels. You must also study Maths GCSE if you have not already achieved a minimum of grade 4/C in this subject.*

### What will I learn?

You will develop your speaking, listening, reading and writing skills through the study of the following: being a young person in a French speaking society, understanding the French speaking world, diversity and difference and France during the occupation.

In every lesson you will take part in many different activities such as watching or listening to news items, studying written passages and working in small groups on speaking tasks. You will develop a wide range of vocabulary and work systematically on learning new grammar.

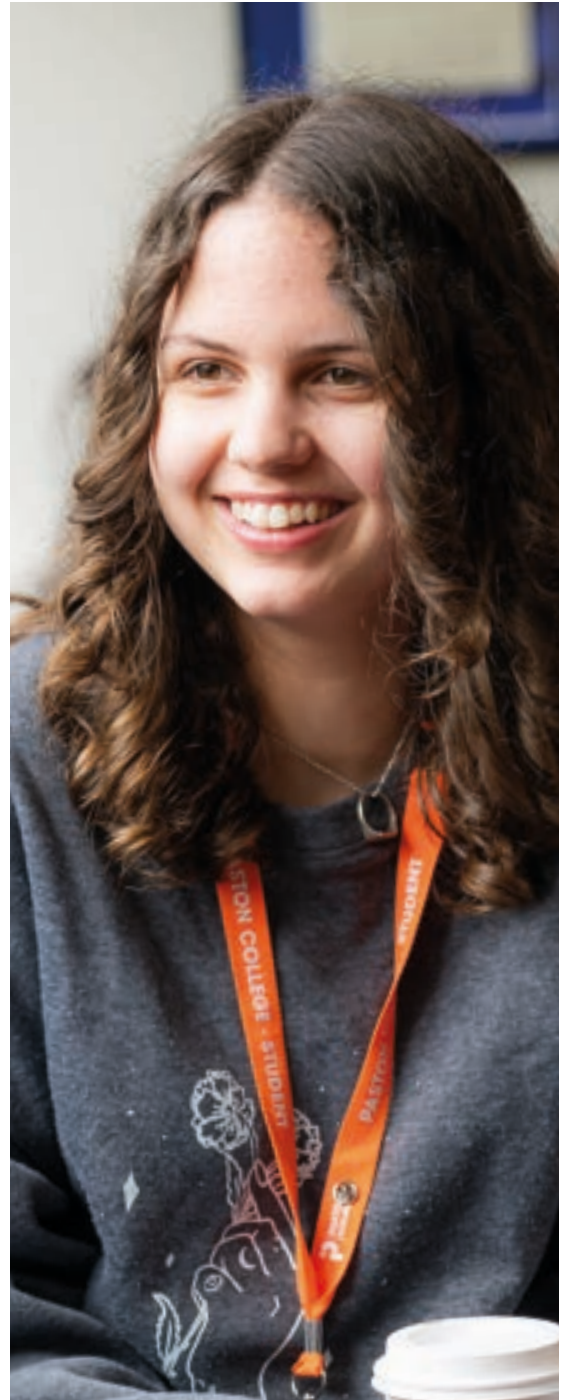
### How am I assessed?

You will be assessed through three exams at the end of the course. These will be an oral exam, a listening, reading and translation paper, and an essay paper.

### What next?

French as a standalone subject or combined with other languages is highly regarded by universities. Recently, our students have gained places at Oxford, Cambridge, Bristol, Nottingham, London and UEA.

After university, our students have entered a range of careers, including in law, education and business.





## Course essentials:



### Courses

#### A Level

Geography



### Careers

#### Cartographer

£18-45K per year

#### Climate Scientist

£15-55K per year

#### Meteorologist

£27-60K per year

#### Seismologist

£24-50K per year

# Geography

**Do you enjoy understanding the changing world around you? Studying geography allows you make sense of the world and helps you develop the skills and knowledge to be global citizens and decision makers in a rapidly changing world.**

## What is it about?

Through studying geography, you learn to appreciate how the physical world influences people and how people impact on place. You will develop skills such as how to plan and undertake geographical research, group and independent learning skills, written communication and mathematical skills.

## What will I do?

You will study to prepare for 3 exams and complete an independent research task worth 20% of your final grade. You will also complete a minimum of 4 days' fieldwork.

Exam Topics:

Paper 1: *Coasts and Earth's Life Support Systems.*

Paper 2: *Changing Places, Power and Borders and Migration.*

Paper 3: *Climate Change and Oceans.*

Paper 4: *Independent course work.*

You are able to choose a theme that you are curious to investigate further. Previous topics have included globalisation, food security, beach sediment profiling, regeneration, water cycle processes and many more.

## Progression

Geography is a facilitating subject which is favoured by top universities. Previous students have progressed onto related degree level courses such as geography, marine biology, conservation, geology and business management. Geographers are also highly prized in the workplace for their problem solving, communication, research and analytical skills.

## Is it suitable for me?

If you are interested in geography and enjoy learning about different places around the world. This is a good subject for you. It combines well with a wide range of subjects such as history and sociology as well as biology and environmental science.

## Enrichment opportunities

You will have the opportunity to complete lots of fieldwork such as coastal studies and re-branding in London. Recent trips abroad have included Madagascar, South Africa, China, Iceland and New York.

# Geography

## Geography A Level

A Level

2 Years

## Geography

### Entry requirements

Minimum of 2 6/B grades and 3 4/C grades at GCSE. You will also need grade 4/C or above in GCSE English Language. Grade 5 or above in Geography and 4/C or above in Maths would be an advantage.

*Please note, vocational subjects cannot replace GCSEs for entry to A Levels. You must also study English Language and/or Maths GCSE if you have not already achieved a minimum of grade 4/C in these subjects.*

### What will I learn?

You will develop skills such as how to plan and undertake geographical research, group and independent learning skills, written communication and mathematical skills.

Exam Topics:

Paper 1: Coasts and Earth's Life Support Systems.

Paper 2: Changing Places, Power and Borders and Migration.

Paper 3: Climate Change and Oceans.

### How am I assessed?

You will be assessed through three exams and through completion of non-exam assessment worth 20% of final grade.

### What next?

Related degree level courses such as geography, marine biology, conservation, geology and business management. Geographers are also highly prized in the workplace for their problem solving, communication, research and analytical skills.



## Course essentials:



### Courses

#### A Level

Graphic Communication



### Careers

#### Graphic Designer

£20-40K per year

#### Website Designer

£18-40K per year

#### Copywriter

£20-80K per year

#### Product Designer

£22-45K per year

# Graphic Communication

**Are you creative and imaginative? Do you enjoy working to a brief, developing ideas through materials, techniques and processes? Are you interested in image, type and page layout? Then Graphics is the course for you!**

## What is it about?

Graphic communication is about the communication of an idea through design. You might be looking at packaging design, newspaper or magazine design, leaflets, posters, apps and websites. Anything which involves typography, page layout and image.

## What will I do?

You will learn a broad range of both digital and non-digital techniques such as the Adobe software (mainly Illustrator and Photoshop), screen printing, drawing skills, digital print and collage. It is a practical course and you work to set briefs and your own themes.

You will also develop an understanding of historical and contemporary influences on graphic design, inspiring your own ideas and outcomes.

There's also the opportunity to exhibit your work in the annual Paston Art Show in June each year and there are opportunities to go on trips abroad to Amsterdam and Berlin.

## Progression

This course builds on the skills, knowledge and understanding developed through study at GCSE. At the end of the course, you will have the skills, knowledge and understanding needed for higher education. Possible degree options are Animation, Digital Arts, Graphic Communication, Graphic Design, Graphic and Communication Design, Media Design, Illustration, Printmaking, Packaging Design, Typographic Design.

## Is it suitable for me?

If you enjoy art and design, being creative, working digitally and like having a bit more guidance working to a brief then graphics is a good choice for you.



# Graphic Communication

Graphic Communication A Level

## Graphic Communication

A Level

2 Years

### Entry requirements

Minimum of 2 6/B grades and 3 4/C grades at GCSE. You will also need grade 4/C or above in GCSE Art, Graphics or Photography. If you did not take GCSE Art, Graphics or Photography you must have a portfolio approved at interview.

*Please note, vocational subjects cannot replace GCSEs for entry to A Levels. You must also study English Language and/or Maths GCSE if you have not already achieved a minimum of grade 4/C in these subjects.*

### What will I learn?

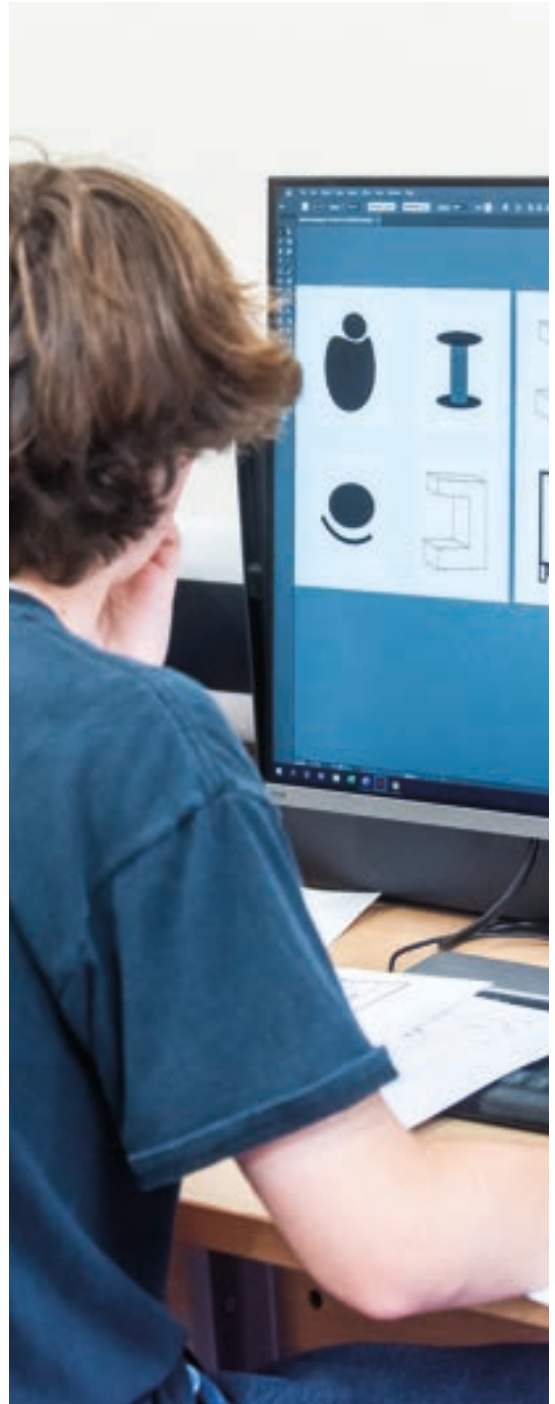
This dynamic course will allow you to develop the essential skills for effective design by working to a series of set briefs and personal projects. You will develop a thorough grounding in the fundamentals of design and gain confidence in the use of a range of techniques.

### How am I assessed?

You will be assessed on two components across the two years. For component 1 you will develop work for a personal investigation into an idea, issue, concept or theme supported by written material. This will count for 60% of your total A Level marks. In component 2 you will produce personal work in response to one of eight exciting starting points which will count for 40% of your total A Level marks.

### What next?

This course helps you to prepare for the next step in your creative career. Many students go directly on to degree courses at a wide range of universities and art schools to study Graphics or other visual art disciplines.



## Course essentials:



### Courses

#### Level 3

Level 3 BTEC Extended Diploma in Health & Social Care



### Careers

#### Care Worker

£14-25K per year

#### Counsellor

£28-50K per year

#### Healthcare Assistant

£22-28K per year

#### Nurse

£28-43K per year

#### Social Worker

£27-50K per year

## Gain practical experience

Take part in hands-on practical work experience with health and social care providers.

# Health & Social Care

**If you have a passion for helping others and are looking for a rewarding career that allows you to make a difference to people's lives, our health and social care courses could be for you.**

### What is it about?

Whether you want to work in a care environment, support families as a social worker or become a nurse or midwife, our courses are designed to give you the knowledge and practical skills you need to pursue a career in one of these invaluable vocations.

### What will I do?

Throughout your course you will have opportunities to develop relevant health sector skills, knowledge and behaviors through industry placements in your chosen occupation specialism. In tandem with this, you will be taught by highly skilled staff in a unique learning environment.

### Progression

Our courses will provide you with core knowledge and practical skills that will allow you to progress on to a variety of rewarding destinations after competing your qualification. These could include the next level of college-based study, university level courses, Apprenticeship or employment. Job opportunities can be found within midwifery, social work, care or other allied health related professions. Additionally, you have the opportunity to pursue a degree at City College Norwich, with foundation courses available in Health Studies or Mental Health Practice.

### Is it suitable for me?

If you are interested in working with others and helping people to improve their quality of life, this course could be for you. We are looking for people who are kind, compassionate, resilient, can show empathy and have good communication skills.

### Unique opportunities

There will be the opportunity to complete practical creative and therapeutic activities as part of the course which can provide you with valuable skills for employment. You will also have a chance to complete a fundraising activity.

# Health & Social Care

BTEC Extended Diploma in Health & Social Care

## BTEC Extended Diploma in Health & Social Care

Level 3

2 Years

### Entry requirements

A minimum of five GCSEs at grade 4/C or above which must include English Language and Maths or a Level 2 Health and Social Care course at Merit or above with and GCSE English Language and Maths at grade 4 or above.

You will need a Disclosure & Barring Service check (there is a small fee).

### Course equivalent

This course is equivalent to three A Levels.

### What will I learn?

This course will allow you to gain a comprehensive understanding of the health and social care sector by giving you the knowledge and skills you need to progress in the industry.

You will cover a variety of subject specific topics such as promoting public health and physiological disorders and their care. You will also be required to complete work experience in the sector.

### How am I assessed?

You will be assessed through an external examination, an employer set project and synoptic assessments. You will also complete a record log for your industry placement to ensure you meet the skills threshold for that occupation.

### What next?

Successful completion of this course will allow you to progress on to subject related university level courses, or progress on to a career in nursing, social work or other health related professions.

## Excellent career opportunities

The sector employs almost 1.5 million people and there is constant demand for skilled workers.



## Course essentials:



### Courses

#### A Level

History



### Careers

#### Archaeologist

£24-40K per year

#### Archivist

£23-45K per year

#### Museum Curator

£18-40K per year

#### Solicitor

£25-100K per year

# History

**Are you fascinated by how society is shaped by the past? Studying history allows you to explore why change occurs and how society experiences change.**

## What is it about?

Studying history gives you an understanding of events and develops important skills such as communication, analysis and evidencing an argument.

## What will I do?

You will study for three exams and complete one coursework essay on a topic of your choice.

Paper 1 – Britain Transformed 1918-1997.

Paper 2 – USA Boom Bust and Recovery 1920-1955.

Paper 3 – The Witchcraze in Europe and North America c1580-c1750.

Previous coursework topics have included WWI, the rise of Hitler, the French and Russian Revolutions, the American Civil War and more.

## Progression

You can progress to a range of degree courses and careers as varied as journalism, politics, law, teaching and management. Past students have studied Law, Archeology, Classics, Modern History, Journalism, Film Studies, Drama and Ancient History at universities such as Cambridge, Oxford, York, Royal Holloway and UEA.

## Is it suitable for me?

If you are interested in history, enjoy learning and writing about the past, are open to lively debates, always willing to put forward an opinion and want to understand how the world we know today was created, then this course is for you.

## Enrichment opportunities

Paston works with the Holocaust Education Trust every year and between 2 and 4 students are selected to attend their Lessons from Auschwitz course which involves a trip to Poland.

History students have been on trips to London, Berlin and New York in the past two years and students also had the opportunity to work with the Media department on the Deep History project and with Cromer Museum.



# History

History A Level

## History

A Level

2 Years

### Entry requirements

Minimum of 2 6/B grades and 3 4/C grades at GCSE. You will also need grade 5 or above in GCSE English Language.

*Please note, vocational subjects cannot replace GCSEs for entry to A Levels. You must also study English Language and/or Maths GCSE if you have not already achieved a minimum of grade 4/C in these subjects.*

### What will I learn?

You will explore why changes in history occurred and how these changes shape societies and the world around us today. We will bring history to life through a wide range of interactive teaching methods which will help you develop a good understanding of key historical periods, as well as developing essential transferable skills.

### How am I assessed?

You will be assessed through three examinations covering the three compulsory subjects and one piece of coursework based on a topic of your choice.

Paper 1 – Britain Transformed 1918-1997

Paper 2 – USA Boom Bust and Recovery 1920-1955

Paper 3 – The Witchcraze in Europe and North America c1580-c1750.

### What next?

You can progress to a wide range of degree courses and careers as varied as journalism, politics, law, teaching and management.



## Student profile: Matthew

Studied: **A Level History**

" I most enjoyed studying the witchcraft topic - brutal yet fascinating subject but also provided further understanding of historical events such as the English Civil War or the Thirty Years' War. Teaching and support are high quality and very helpful, especially as advice and revision sessions are provided if you need them. The course has given me the desire to pursue my history studies even further, and later become a history teacher."

## Course essentials:



### Courses

#### A Level

History of Art



### Careers

#### Architect

£30-60K+ per year

#### Arts Administrator

£15-30K per year

#### Archivist

£23-45K per year

#### Museum Curator

£18-40K per year

#### Art valuer

£20-40K per year

#### Journalist

£23-42K per year

#### Public Relations Officer

£22-40K per year

# History of Art

If you're interested in art and architecture and how these reflect the society which produced them, then History of Art could be for you. Previous knowledge doesn't matter as long as you are excited and inspired by the visual: art in a gallery, sculpture in your local park or just the buildings you pass on your way to College.

## What is it about?

Art and architecture are everywhere! History of Art is a vibrant, exciting subject through which you can learn so much about society of both the past and present. The art and architecture produced by a society reflect its values and beliefs; through studying art, architecture and artefacts from classical civilisation through to the present day, you will be able to experience history and society in an exciting and relevant way. There is a strong focus on non-Western art too, so it's a great opportunity to explore a range of cultures and belief systems. It's not all about history though; we study how art presents exciting and relevant contemporary topics such as gender, sexuality, race and ethnicity. In today's world, visual literacy is an essential skill. Through focused visual analysis skills, you'll become

adept at decoding images, whether those be on Instagram or in the Tate Modern!

## What will I do?

You will gain an understanding of how the world we see today was created by past events. We bring art history to life through a range of interactive teaching from fun visual tasks to detailed understanding of critical methodologies.

In year one, you will study how identity and nature are presented in art from around the world. Year two looks at art and architecture from the Italian Renaissance period and nineteenth century France and England.

## Progression

A wide range of skills including visual literacy and advanced communication skills opens up a range of degree courses and careers as varied as museum studies, journalism, marketing, law, teaching and management.

## Is it suitable for me?

If you are interested in history, art and society then this course is for you.

## Unique opportunities

We pride ourselves on our enrichment programme. We've run visits to all the main London galleries, Cambridge Universities, architectural tours around Greenwich and a trip to Paris. We work with the Courtauld Institute and RIBA. Future opportunities also include European trips to places such as Rome.

# History of Art

History of Art A Level

A Level

2 Years

## History of Art

### Entry requirements

Minimum of 2 6/B grades and 3 4/C grades at GCSE. You will also need grade 4/C or above in GCSE English Language.

*Please note, vocational subjects cannot replace GCSEs for entry to A Levels. You must also study English Language and/or Maths GCSE if you have not already achieved a minimum of grade 4/C in these subjects.*

### What will I learn?

This course will allow you to develop an understanding of the relationship between society and art. You will learn art historical terms, concepts and issues while exploring the influence of cultural, social and political factors on what we see. You will also study developments in materials, techniques and processes of both art and architecture across historical periods and cultures.

### How am I assessed?

You will be assessed by two three hour exams, both worth 50% of your final mark.

### What next?

This course is a well renowned academic course which will provide you with a solid foundation of transferable skills, allowing you to progress onto a degree level course at university or college, or directly to exciting employment opportunities.



### Student profile:

**Freya**

Studied: **A Level History of Art**

Currently: **BA (Hons) History of Art at the University of East Anglia**

" Studying History of Art was my favourite part of being at Paston. You learn how to analyse any work of art, which improved my communication and visual literacy skills. This massively increased my confidence both in lesson and when visiting art galleries, and I have been able to apply these to my studies at degree level. The lessons are fun and are structured to make you excited to learn more, which encouraged me to continue studying this incredibly diverse subject at university."



## Course essentials:



### Courses

#### A Level

Law



### Careers

#### Legal Executive

£17-60k per year

#### Solicitor

£25-100K per year

#### Barrister

£21-200K per year

#### Police Officer

£28-46K per year

#### Paralegal

£20-40K per year

#### Probation Officer

£24-40K per year

# Law

**Have you ever wondered who makes the laws? What's the role of parliament? What happens when a person is called for jury service? How do you protect your rights if you get injured through someone's negligence? Learn about how the Criminal Justice System works? What rights do you have as a consumer?**

## What is it about?

Law courses explore society around us, questioning the unwritten rules, and understanding how the past has shaped the laws we obey today.

## What will I do?

You will explore the criminal and civil justice system, using innovative and practical techniques to gain insight into why crime and torts are committed and when a breach of contract occurs within the English legal system.

## Progression

Through studying A-Level Law you will build key transferable skills including; organisation, time management, written and spoken communication, comprehension, analytical and evaluation skills, attention to detail and problem solving.

Law is a fantastic subject to choose if you wish to have a career in Law, but equally a great facilitating subject to support transition into alternative careers.

You can progress to a range of degree courses and careers as varied as journalism, politics, business management, law, teaching, police, corrections and law enforcement.

Past students have studied Criminology, Business, Law, Geography, Education, English, Asian studies, Archeology and Graphics at universities such as Cambridge, Oxford, Durham, UEA, even the State University of New York.

## Is it suitable for me?

If you are interested in how our legal system works, how to secure convictions, your rights in a number of legal matters (e.g. – when does a noisy neighbour become a nuisance? When is an employer responsible for the acts of their employees? Are exclusion clauses and warning signs always valid?), if you can assess given scenarios and have an inquisitive (or argumentative) mind, and love to read cases law, then law could be a great choice for you.

## Enrichment opportunities

You will be taught by professional teaching staff. We ensure you extend your experience beyond your course content with a variety of additional learning experiences. This includes visits, trips, conferences and guest speakers.



# Law

## Law A Level

A Level

2 Years

## Law

### Entry requirements

Minimum of 2 6/B grades and 3 4/C grades at GCSE. You will also need grade 5 or above in GCSE English Language.

*Please note, vocational subjects cannot replace GCSEs for entry to A Levels. You must also study English Language and/or Maths GCSE if you have not already achieved a minimum of grade 4/C in either subject. Entry to study law requires a 5 in English language.*

### What will I learn?

You will study four areas of law: the English legal system and the nature of law, criminal law, the law of tort and contract law. You will learn about different offences, civil wrongs and how to assess liability using sources of law such as cases and statutes to support and evidence your arguments.

You will also learn how to think logically and break down arguments into their component parts which are useful skills for whatever you choose to do in the future.

### How am I assessed?

This subject is assessed by three written exam papers that will take place at the end of the course.

### What next?

This subject at our College is very successful with student results often in the top 10 nationally. You can progress on to study law at university which is essential if you want to become a barrister or solicitor. This subject is also useful if you're looking to work in the probation service, police force or anything related to the country's legal system.



### Student profile:

#### James

Studied: **Law A level**

"A Level Law has far been my favourite subject out of the 3 I have taken. Although Law can be very difficult at times, particularly contract law, my tutor has gone to great depths to make sure I understand the content. At the beginning of the year, I was averaging B's, but with support and guidance, I achieved A's in both mock exams. The teacher is friendly, knowledgeable, and approachable, making law lessons enjoyable."



## Course essentials:



### Courses

#### A Level

Further Maths  
Mathematics



### Careers

#### Data Analyst

£23-40k per year

#### Statistician

£23-60k per year

#### Economist

£23-60K per year

#### Financial Adviser

£23-60k per year

#### Management

£35-90k per year

#### Accountant

£30-60k per year

# Maths

**Do numbers and statistics help you make sense of the world around us? Choose one of our maths courses to gain a solid mathematical foundation of knowledge and skills that will help you progress to further study and your chosen career.**

### What is it about?

Our expert teaching staff will encourage you to think, act and communicate mathematically and provide you with the skills to analyse situations in mathematics and elsewhere.

### What will I do?

You will acquire skills that are in high demand from employers and universities. Topics you will study included pure mathematics, statistics and mechanics.

You will develop skills such as team working, resilience, effective communication of complex ideas and the ability to use your own initiative.

### Progression

You could progress to further mathematical study or enter employment in a variety of fields including banking, insurance, architecture, economics, medicine and law. The transferable skills of logical thinking, problem solving and analysis that you will develop during this course are always in high demand.

### Is it suitable for me?

If you achieve good grades in GCSE Maths, enjoy working with numbers, statistics and problem solving, then A Level Maths could be for you.

### Enrichment opportunities

You will have the opportunity to attend trips to inspire you and to enhance your passion for the subject. The Maths Inspiration trip to Cambridge allows you to see the wider applications of the subject. We also attend a Mathematical Symposium in Norwich where you get the opportunity to be inspired by outstanding external speakers.



# Maths

Further Maths A Level / Mathematics A Level

A Level

## Further Maths

1-2 Years

### Entry requirements

Minimum of 2 6/B grades and 3 4/C grades at GCSE. You will also need grade 8 or above in GCSE Maths. This subject must be taken in combination with A Level Maths and two other subjects.

*Please note, vocational subjects cannot replace GCSEs for entry to A Levels. You must also study English Language and/or Maths GCSE if you have not already achieved a minimum of grade 4/C in these subjects.*

### What will I learn?

This course builds on the knowledge of A Level mathematics and involves the further study of pure mathematics as well as optional units of statistics, mechanics, working with algorithms, numerical methods, extra pure or further pure with technology.

This is a great opportunity for enthusiastic mathematicians to broaden and deepen their subject knowledge. You will study a variety of topics based around three overarching themes: core pure, statistics, working with algorithms, numerical methods, extra pure or further pure with technology. You will focus on mathematical argument, language and proof, problem solving and modelling as well as vectors and 3D space, algebra, series, calculus, sampling, networks and linear programming.

This subject can be taken as an AS Level (1 year) or full A Level (2 years).

### How am I assessed?

Assessment is mainly through written examinations.

### What next?

This subject is useful for people intending to study mathematics, engineering, IT and other related subjects at degree level. It could lead to degrees in other subjects such as: science, economics, engineering or computing.

A Level

## Mathematics

2 Years

### Entry requirements

Minimum of 2 6/B grades and 3 4/C grades at GCSE. You will also need grade 6/B or above in GCSE Maths.

*Please note, vocational subjects cannot replace GCSEs for entry to A Levels. You must also study English Language and/or Maths GCSE if you have not already achieved a minimum of grade 4/C in these subjects.*

### What will I learn?

During this course you will cover combinations of topics:

**Pure mathematics:** Including algebra, coordinate geometry, sequences and series, trigonometry, exponentials and logarithms, calculus and vectors.

**Statistics:** Including statistical sampling, data presentation and interpretation, probability and statistical hypothesis testing.

**Mechanics:** Including models and quantities, kinematics in one- and two-dimensions projectiles, forces and Newton's laws of motion.

### How am I assessed?

You will be assessed by three written exam papers at the end of the course.

### What next?

The transferable skills of logical thinking, problem solving and analysis that you will develop during this course are always in high demand. This will allow you to progress on to further mathematical study at degree level or enter employment in a variety of fields including banking, insurance, architecture, economics, medicine and law.



## Core Mathematics

2 Years

### Entry requirements

4/C grade in GCSE Maths.

*Please note, vocational subjects cannot replace GCSEs for entry to A Levels. You must also study English Language and/or Maths GCSE if you have not already achieved a minimum of grade 4/C in these subjects.*

### What will I learn?

During this course you will cover combinations of topics:

- **Statistics and algebra**
- **Probability and estimation**
- **Data analysis and modelling**
- **Sequences and growth**
- **Financial planning and management**
- **Collaborative problem-solving approaches and techniques**
- **Using technology and spreadsheets**

### How am I assessed?

You will complete two 2 hour papers at the end of the two years. Both of which are worth 50% of the assessment

### What next?

This course has been developed with employers, universities and professional bodies as valuable preparation for higher education and employment. Many leading universities have endorsed the Core Maths qualification since it equips students with the mathematics skills that are required for many degree courses. Additionally, School and College leavers who attain the Core Maths qualification will automatically be in a position to apply the enhanced practical maths skills they've learnt in an array of business and financial contexts.



## Course essentials:



### Courses

#### A Level

Film Studies  
Media Studies

#### Level 2

Creative Media Production

#### Level 3

(Equivalent to 3 A Levels)  
Creative Digital  
Media Production



### Careers

#### Audio Visual Technician

£22-35K per year

#### Editor

£18-45K per year

#### Journalist

£24-45K per year

#### Lighting Technician

£15-40K per year

#### Social Media Marketing

£25-60K per year

#### TV / Film Direction

Variable

#### Videographer

£18-50K per year

# Media & Film Studies

**Have you always wondered what goes on behind your screen or behind the headlines? Discover industry insights and the key workings of production with our media courses.**

## What is it about?

If you're planning on a career in the media industry, our media courses can get you there. On our courses you will gain a real insight into the industry, develop essential digital skills and learn to work collaboratively across a range of media.

## What will I do?

You'll explore the media industry and study a range of media forms. You will develop research skills through investigations, learn to engage in critical debate and network with industry professionals.

You'll learn from industry experts using our editing suites, recording booths and specialist equipment, and gain real experience of work taking part in projects with organisations such as BBC Voices and ITV.

## Progression

You can progress onto a range of practical and theoretical degree level courses at university. Our students go into media-related careers, examples of companies our students have worked for include BBC television and radio, ITV, Channel 4, Disney, Norwich City Football Club, Cromer Pier Theatre, Heart Radio, EDP and Framstore.

## Is it suitable for me?

These courses are suitable for critical thinkers and those who can demonstrate an ability to make informed arguments and engage in critical debates. You will also need to be willing to learn new practical skills and develop your understanding and knowledge of digital media products.

## Enrichment opportunities

Film Enrichment is an extracurricular opportunity which allows students to work together as part of a production team, working on an external commission. Previously students have collaborated with Cromer Museum, Kick the Dust and Creative Collisions.

Recent industry focused trips and visits trips have included New York, The Berlin Film Festival, Warner Bros. Studio Tour, Tate Modern and the British Film Institute.

## Learn from industry experts

Work with specialists in the industry as part of project tasks, including the BBC and ITV.



# Media, Film Studies

Creative Media Production Level 2 / Creative Media Production Level 3

## Creative Media Production

Level 2

1 Year

### Entry requirements

Minimum of four Grade 3s at GCSE one of which must be English Language Grade 3. This course is designed for those students who just miss our entry requirements for level 3 study. It includes an opportunity to improve your GCSE English Language and Maths grades. You will be invited to an interview prior to selection.

### Course equivalent

This course is equivalent to studying at the level of GCSE grade C/4 or above.

### What will I learn?

This course is an ideal starting point if you want to pursue a career in the media. It will give you all the skills you need to progress to our Level 3 course in media production and beyond. The course focuses on both practical and theory aspects of media, enabling you to develop a range of skills and techniques, personal qualities and attitudes essential to be successful in the creative media industry.

In addition to your main programme you will also study Maths and English. Depending on your grades on entry you will either study Functional Skills or GCSE.

### How am I assessed?

You will be assessed through a series of projects that are designed to broaden your skills, experience and expertise. Each project requires you to work collaboratively and proactively with students as well as external clients and stakeholders. A final assessment decides your overall grade for the year which is graded at pass, merit or distinction.

### What next?

You can progress on to our Level 3 course. To help prepare you for your next step, we work with higher education providers such as NUA, Suffolk One, London College of Communication and Central St Martins. We are also part of the University of the Arts London Progression Partnership. This course also provides fantastic opportunities to develop skills that universities and employers look for including collaborative working and problem solving.

## Creative Media Production

Level 3

2 Years

### Entry requirements

Minimum of five Grade 4s at GCSE. You must also have grade 4/C or above in GCSE English Language and either Media or Graphics GCSE Grade 4 or Merit/ Distinction in a BTEC First Diploma in Media (can replace 4 GCSEs).

If you are not studying Media or Graphics at GCSE, you will be asked to provide evidence of a creative skills during the interview process. If you have not already achieved GCSE Grade 4 in Maths you will also study this alongside your course.

### Course equivalent

This course is equivalent to three A Levels.

### What will I learn?

You will work on a number of projects over two years which will allow you to build up an impressive portfolio. You will be working either by yourself or as part of a larger production team where you can specialise to develop your chosen skills further (e.g. editor, cinematographer, visual effects, animator).

You will also have the opportunity to work with local companies and organisations on a range of projects, producing work for them to a high professional standard to meet their brief.

### How am I assessed?

You will be assessed through a combination of internal units and exams, which are combined to give you a final grade at the end of the course. There are currently 9 internal units and 4 external (examination) units over the 2 years of the course.

### What next?

You may wish, like many of our students, to continue your study of media and can do so locally, with NUA and UEA or further afield at institutions such as Westminster, Ravensbourne and Bournemouth.



# Media, Film Studies

Film Studies A Level / Media Studies A Level

A Level

2 Years

## Film Studies

### Entry requirements

Minimum of 2 6/B grades and 3 4/C grades at GCSE. You will also need grade 4/C or above in GCSE English Language.

*Please note, vocational subjects cannot replace GCSEs for entry to A Levels. You must also study English Language and/or Maths GCSE if you have not already achieved a minimum of grade 4/C in these subjects.*

### What will I learn?

This course is a fantastic opportunity for you to engage with film in a critical and analytical way, and provides an introduction to film analysis, filmmaking, and the film industry in Hollywood, Europe and across the world. You will develop theoretical and practical skills by studying a range of films and case studies, exploring film analysis techniques, the film industry and film audiences.

You will also focus on a variety of topics and themes, including how a film constructs meaning through the use of film language conventions to provoke a variety of responses from the audience.

### How am I assessed?

Assessment is through project work and written examinations.

### What next?

You can progress to degree level study at university or college, as well as going straight into your career.

A Level

2 Years

## Media Studies

### Entry requirements

Minimum of 2 6/B grades and 3 4/C grades at GCSE. You will also need grade 4/C or above in GCSE English Language.

*Please note, vocational subjects cannot replace GCSEs for entry to A Levels. You must also study English Language and/or Maths GCSE if you have not already achieved a minimum of grade 4/C in these subjects.*

### What will I learn?

You will study the theoretical framework of media – genre, representation, audience, institutions, narrative and language – through critical analysis of media texts and practical production work.

Throughout the course you will study nine media forms: television, film, radio, newspaper, magazine, advertising and marketing, online, social and participatory media, video games and music videos.

### How am I assessed?

Assessment is through exams (70% of overall grade) and coursework (30% of overall grade).

### What next?

You can progress on to university or study for a professional qualification in a wide range of areas including media production, media studies, film studies, digital film production, television production, journalism, advertising/marketing, events and exhibition management.

## Course essentials:



### Courses

#### A Level

Religion Philosophy & Ethics



### Careers

#### Higher Education (HE) Lecturer

£33-55k per year

#### Further Education (FE) Lecturer

£24-40k per year

#### Counsellor

£28-50k per year

# Philosophy & Religion

Seek to understand the world around you through increasing your self-awareness and enhancing your critical faculties with our philosophy and religion course. You will cover Christianity as the major world faith studied and look at its impact on culture and society as well as its relationship to the big questions of philosophy.

### What is it about?

This course encourages you to engage critically with contemporary moral and ethical issues as well as exploring the nature of religion and its relation to the modern world.

### What will I do?

You will enhance your understanding of the main philosophical and ethical issues in modern religious thought. You will develop a broad knowledge of religion and enquire into the purposes and commitments of human life – especially those expressed in philosophy, ethics and religion.

### Progression

You can progress into areas such as teaching, research, social policy, development, theological training and much more. The transferable skills you develop will assist you in continuing your education at university or progressing within a career.

### Is it suitable for me?

During this course, we will consider: is there a meaning to life, what happens when we die, what is morality and does God exist? If you are wanting to explore and appreciate some of life's big questions, this is the course for you.

### Enrichment opportunities

You will be encouraged to make connections so that you understand the influences and developments of religious beliefs and practices, the philosophy of religion, religious ethics and textual interpretation.

You will have the opportunity to hear from religious leaders and philosophers. Students have also gone on trips to Rome and Vatican City to understand the significant impact that religion has had on the world.

# Philosophy & Religion

Philosophy Religion & Ethics A Level

## Philosophy Religion & Ethics

A Level

2 Years

### Entry requirements

Minimum of 2 6/B grades and 3 4/C grades at GCSE. You will also need grade 4/C or above in GCSE English Language.

*Please note, vocational subjects cannot replace GCSEs for entry to A Levels. You must also study English Language and/or Maths GCSE if you have not already achieved a minimum of grade 4/C in these subjects.*

### What will I learn?

This course covers Christianity as its main religious component. You will engage critically with contemporary moral and ethical issues, as well as exploring the nature of religion and its relation to the modern world.

### How am I assessed?

Each topic falls with the two components. Each has a three hour exam the combination of which comprises your total A Level mark.

### What next?

You will develop key transferable skills which will provide you with a strong foundation to continue your education at university.

You can progress to careers in teaching, research, social policy, development and theological training.



## Course essentials:



### Courses

#### A Level

A Level Photography



### Careers

#### Photographer

Variable

#### Architect

£30-60k per year

#### Fashion Designer

£24-40k per year

#### Marketing Manager

£30-65k per year

#### Film Producer

Variable

# Photography

**A Level Photography teaches you the essential skills to confidently explore both the technical and expressive nature of the medium. On the course you will find your own creative voice and visual language.**

## What is it about?

Photography has evolved to become one of the most important forms of visual communication. It has a wide variety of applications in areas such as documentary, fashion, editorial, fine art, sports, and natural history. At Paston College we balance the use of both traditional film photography and digital processes, with darkroom facilities for 35mm, 120mm and 5x4" film enlargements as well as a suite of computers for high quality large format printing (A1+).

## What will I do?

At the beginning of the course, you will learn and refine your understanding of core principles in the various functions of the camera, the use of Adobe editing software, and darkroom techniques, through a series of short assignments.

You will then be able to embark on a personal exploration (Component 1) with freedom to choose your own subject, theme, and ideas to express. Throughout the course you will be supported to develop your coursework towards a final piece. Towards the end of the second year an exam paper is released (Component 2) with eight themes to choose from to produce experimental coursework leading up to a fifteen-hour practical exam.

You will develop skills such as team working, resilience, effective communication of complex ideas and the ability to use your own initiative.

## Progression

You could progress to further mathematical study at university, undertake an apprenticeship or enter employment.

## Is it suitable for me?

You don't have to have any previous experience of photography at GCSE to start the course, just the entry requirements for A Level and an enthusiastic mind set to explore skills, ideas and develop your own style, capturing images of the world around you. Photography can be a wonderful creative outlet to complement a wide variety of other A level subjects at Paston. Film and digital equipment are available for hire during the course.



# Photography

A Level

2 Years

## Photography

### Entry requirements

Minimum of 2 6/B grades and 3 4/C grades at GCSE. You will also need grade 4/C or above in GCSE Art, Graphics or Photography. If you did not take GCSE Art, Graphics or Photography you must have a portfolio approved at interview.

*Please note, vocational subjects cannot replace GCSEs for entry to A Levels. You must also study English Language and/or Maths GCSE if you have not already achieved a minimum of grade 4/C in these subjects.*

### What will I learn?

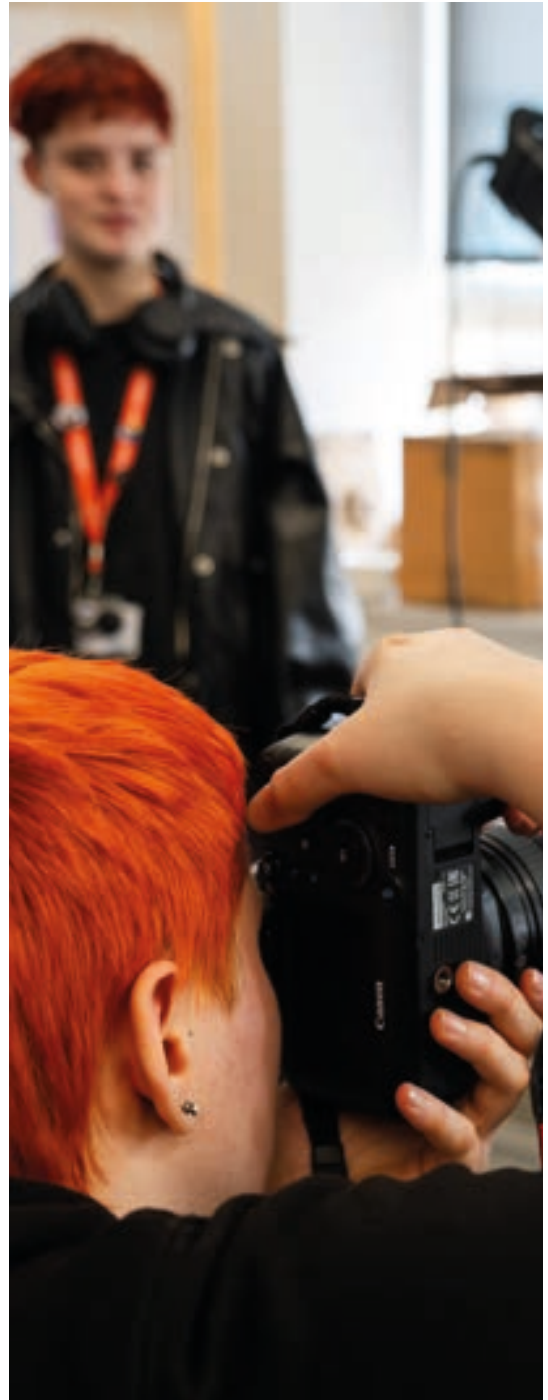
You will learn a wide variety of camera, software, and darkroom skills based around 35mm, 120mm, 5x4" film and 35mm digital formats. You will use cameras with fully manual settings to understand exposure and utilise unique qualities such as depth of field and motion capture. You will learn how to process film, enlarge and tone images with experimental printing techniques such as cyanotype and albumen printing. Flash photography in studio and location settings. Adobe Photoshop and Camera RAW editing styles. Aesthetics – composition, lighting, colour and tonal theories. Research methods for inspiration in historical and contemporary practice.

### How am I assessed?

Component 1 – 60% and Component 2 – 40%. Each coursework-based assignment is formally assessed giving you a grade from A-E. You will be able to understand from four assessment criteria what evidence is required and how to make the most of your studies and creativity. Informal assessment is given regularly during one-to-one reviews in lesson, identifying strengths and negotiating creative goals.

### What next?

Previous students have progressed to various forms of Photography or other arts subjects at university. Many have gone on to study subjects such as Architecture, Fashion, Marketing, and Film Production.



## Course essentials:



### Courses

#### A Level

Physical Education

#### Level 3 BTEC

(Equivalent to 3 A Levels)

Sport & Exercise Science



### Careers

#### Physiotherapist

£28-50k per year

#### Sports Coach

£19-28K per year

#### Sports Development Officer

£18-30k per year

#### Sports Scientist

£23-50k per year

#### Personal Trainer

Variable

# Physical Education, Sport

From physiology to fitness, from sport nutrition to sports psychology, our courses will provide you with the knowledge, understanding, and skills that underpin the sport and exercise science industry.

### What is it about?

You will learn about the human body, how it moves, improves and recovers, all through the expert guidance of our supportive and experienced teaching staff.

### What will I do?

You will analyse and improve your own performance levels through personal fitness tests and theories. You will have the opportunity to coach your peers and local primary and secondary school children.

### Progression

You can progress to degree level study at university or college.

Our courses provide routes to lots of different careers in sports science, development, psychology and nutrition including roles such as gym instructor or leisure centre assistant, personal trainer and sports physiotherapist.

### Is it suitable for me?

If you enjoy hands on practical learning, as well as analysing both your own and other people's sporting performance, our courses could be the next step for you.

### Enrichment opportunities

You will analyse and improve your own performance levels through personal fitness tests and theories. You can use the sports science facilities at our sister site at Easton College to experiment with sports nutrition, carry out scientific testing and learn about strength and conditioning.

There are numerous opportunities to try new sports and activities at lunchtime and after college and the college run sports teams where there is demand.



# Physical Education, Sport

Physical Education A Level / Sport & Exercise Science Level 3

## Physical Education

A Level

2 Years

### Entry requirements

Minimum of 2 6/B grades and 3 4/C grades at GCSE. You will also need grade 4/C or above in GCSE English Language. Grade 5 or above in GCSE Physical Education (PE) could be an advantage but it is not compulsory.

*Please note, vocational subjects cannot replace GCSEs for entry to A Levels. You must also study English Language and/or Maths GCSE if you have not already achieved a minimum of grade 4/C in these subjects.*

### What will I learn?

You will learn the reasons why we do things and why some people out-perform others, mentally and physically. You will also delve into the ethical considerations behind the use of drugs and also the influence that modern technology is having in and on physical activity and sport.

Topics we cover include:

- Cardiovascular and energy systems during exercise
- Diet and nutrition
- Training methods
- Sports injuries
- Improving performance through coaching knowledge
- Sports psychology.

### How am I assessed?

**Exams:** 4 hours of exams totalling 70% of the final grade.

**Practical performance and analysis:** As either a coach or a performer in an activity. 15% of the final grade for performance, 15% for analysing performance.

### What next?

You can progress to study a range of sports related courses at university including sports science, sports management, teaching and sports therapy/physiotherapy.

This course provides routes into a range of careers including sports coaching, sports science and gym management.

## Sport & Exercise Science

Level 3

1-2 Years

### Entry requirements

Minimum of 5 4/C grades at GCSE including English Language & maths or a Merit/Distinction in a relevant BTEC First Diploma (or equivalent) plus 1 4/C grade at GCSE.

You must also study English Language and/or Maths GCSE if you have not already achieved grade 4/C in these subjects.

### What will I learn?

You will develop a good understanding and knowledge of the sports and leisure sector as well as developing the essential skills required for employment or progression to further qualifications and training. You will study modules including anatomy and physiology, sports psychology, fitness testing, coaching, fitness training, nutrition and sports injuries.

### How am I assessed?

You will be assessed through a variety of methods including assignments, research projects, presentations, role play and group discussions. There are also exams in both years totalling around 40% of your overall grade for the course.

### What next?

You can progress to many careers which include sport and exercise scientist or psychologist, a gym instructor or leisure centre assistant, personal trainer, sport development, sports nutrition and sports physiotherapist.

Some of these careers will require further study at degree level. If you are looking for a career in non-sports physiotherapy this may be a suitable pathway but check with your university or college of choice.

### Course equivalent

This course is equivalent to three A Levels.



## Student profile:

### George

Studied: **Level 3 BTEC Sport & Exercise Sciences**

Currently: **Bsc Hons Degree in Sport Science at University**

" I chose this course as my next step after completing the Level 2 Academies (Sport BTEC) at Easton College. I wanted to further my knowledge and skills regarding sport. I have loved the variety of sports we have played, especially since I have learnt to really enjoy sports that I never used to. In my first year, lockdown made life much harder for students and teachers but the lecturers worked hard to help get through the academic year with as little disruption as possible. In my second year, the appointment of a new course leader brought the college experience to new levels with much more support and engaging teaching, as well as sports clubs for everyone to enjoy."





## Course essentials:



### Courses

#### A Level

Physics



### Careers

#### Engineer

£24-99k per year

#### Astrophysicist

£15-60k per year

#### Financial industry

£80-100k per year

#### Architect

£30-60k per year

#### Nuclear Scientist

£31-100k average per year

# Physics

**If you are someone who strives to understand how all things work, Physics is the subject for you. Physics is a highly fascinating subject that aims to understand how the entire physical world around us works. From the extremely small scale of quark interactions to the extremely large scale of the gravitational interactions between galaxies, physics encompasses everything in our universe.**

## What is it about?

You will explore the fundamental principles that govern our universe, enabling you to develop an understanding of the core concepts of Physics. Throughout the course you will continue to develop your problem solving and analytical skills.

## What will I do?

Through the use of experimentation students will have the opportunity to investigate the range of theories in Physics. Students will also have the opportunity to complete and design their own experiments to further enhance their understanding of the subject.

This will not only provide students with the groundwork to study Physics at degree level but will also enable students to approach a broad range of careers and other subjects that are reliant on problem solving and strong scientific skills.

Additionally, students can hear from guest speakers about the new discoveries in Physics, as well as being able to take part in workshop days, gaining hands on experience with content that goes beyond the exam syllabus. There are also outreach opportunities available to engage with younger students to promote the study of Physics beyond secondary education.

## Progression

Physics is a highly regarded qualification and is sought after by many employers, especially those that rely heavily on data analysis and numerical skills. You can progress to degree level study at university or study a range of linked courses such as engineering or architecture.

## Is it suitable for me?

If you have a naturally inquisitive mind and enjoy solving problems, Physics is a subject that you will love.

# Physics

## Physics A Level

A Level

2 Years

## Physics

### Entry requirements

Minimum of 2 6/B grades and 3 4/C grades at GCSE. You will also need a grade 6/B in Mathematics and a grade 6/B in either Physics or Additional Science.

*Please note, vocational subjects cannot replace GCSEs for entry to A Levels. You must also study English Language and/or Maths GCSE if you have not already achieved a minimum of grade 4/C in these subjects.*

### What will I learn?

This course covers a wide range of topics and includes updates that reflect recent discoveries in the field of particle physics. This will provide you with an excellent grounding if you wish to study this subject at a higher level or start your career in areas that are reliant on problem solving and strong scientific skills.

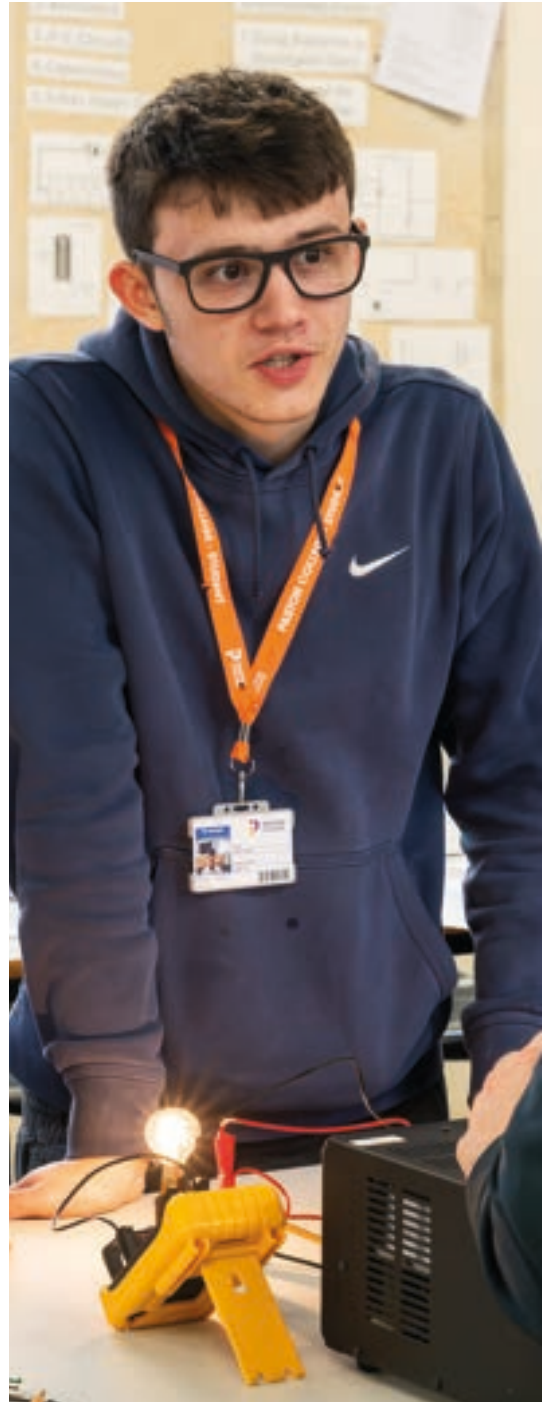
You will cover classic Newtonian physics, electricity and electromagnetism, photons and waves, particle physics, materials, astrophysics and nuclear physics. You will also have the opportunity to complete and design a range of experiments to further enhance your understanding of the subject.

### How am I assessed?

You will be assessed by three written exams.

### What next?

Previous students have progressed onto a variety of courses linked to Physics. Many have gone on to study courses such as engineering, astrophysics and medicine.





## Course essentials:



### Courses

#### A Level

Politics



### Careers

#### MP

£87-104k per year

#### Local Government Officer

£17-37k per year

#### Psychologist

£44-57k per year

#### Teacher

£30-44k per year

# Politics

**Politics influences every aspect of your life, from how much it costs to fill up your car or which topics you study in education. It provides you with the knowledge and understanding about the development of political ideas and practices and how they have been used by politicians over time.**

## What is it about?

Politics is centered upon governance of a country and how power is used within political institutions to make decisions that impact how people live in that area. This includes voting systems, structures of government and parliament, the role and responsibilities of UK Prime Ministers and US Presidents, studied through case studies of former and present leaders.

## What will I do?

In the classroom, you will engage in a range of different learning opportunities. This includes: “since we last met” political discussions each lesson to keep you up-to-date with contemporary issues; reading and note taking of challenging political texts to develop political knowledge and core study skills; case studies of key political figures; watching and analysing leadership

debates; listening to podcasts such as Newscast to inform discussions and guided writing tasks to develop the structure of student essays.

## Progression

Politics is a well-respected A Level, providing opportunities for you to progress to university or alternative HE qualifications, including making strong applications to Russell Group institutions. Many politics students have progressed to university to study degrees in Politics, International Relations and Philosophy, Politics and Economics.

## Is it suitable for me?

Politics is suitable for anyone with an inquisitive mind and an interest in contemporary affairs. You must be willing to engage with politics outside of the classroom, such as through podcasts, political programs and news websites.

## Enrichment opportunities

This year we have had several students who secured work experience at the House of Commons, which included a placement with an MP to experience a ‘day in the life’. We have engaged in virtual parliamentary talks with MPs from the House of Commons. Every year we endeavour to attend the Politicis Conference in London where you can listen to debates from a range of MPs. In-college hustings events are also held for students.



# Politics

## Politics A Level

A Level

2 Years

## Politics

### Entry requirements

Minimum of 2 6/B grades and 3 4/C grades at GCSE. You will also need grade 5 or above in GCSE English Language.

*Please note, vocational subjects cannot replace GCSEs for entry to A Levels. You must also study English Language and/or Maths GCSE if you have not already achieved a minimum of grade 4/C in these subjects.*

### What will I learn?

You will explore issues such as why our voting system might be seen as unfair, whether we have a right not to vote and what comes first – protecting against possible terrorist attacks or defending the rights and freedoms of the individual.

### How am I assessed?

You will be assessed by three exams at the end of your second year, these are each two hours long.

### What next?

You can progress into a variety of careers within the civil service, political parties or local government. You can enter careers in journalism, teaching, and international organisations.





## Course essentials:



### Courses

#### A Level

Psychology



### Careers

#### Psychologist

£44-57k per year

#### Mental Health Nurse

£28-43k per year

#### Teacher

£24-40k per year

# Psychology

**What makes people tick? Why do groups and individuals function in particular ways? What are the biggest motivators of behavioural change? If you are interested in these questions, Psychology could be for you. We consider theoretical content relating to explaining human and animal behaviour and apply knowledge of science to assess the credibility of the ideas we encounter. We look at wider issues such as the extent to which we have freedom to express ourselves, and how we are influenced by nature and nurture.**

## What is it about?

You will question, debate and reflect upon mind and behaviour. Psychology is a multi-perspective subject covering social, cognitive, biological and behavioural ideas in the first year, before moving onto clinical and criminological applications in year 2. You will acquire knowledge and skills relating to experimental and nonexperimental research methodology.

It is a broad field that includes the study of emotions, thoughts, memories, perceptions, and how people interact with one another.

## What will I do?

You will study four approaches in year one, each involving the submission of essay-based assignments and a practical investigation which will be written up as a scientific report. You will learn to describe and evaluate psychological theories and research as well as linking these to wider issues and debates. You will secure skills in numeracy and research, reading comprehension, scientific reasoning, communication and time management. All of which provide a sound basis for future study or workplace environments.

## Progression

Psychology is one of the most popular degree level courses in the UK and this course provides you with an excellent entry point to further study. There are a number of career options open to you as a psychology graduate, such as educational support roles, corporate industry sectors such as marketing or research or health professions.

## Is it suitable for me?

If you're interested in understanding the influences that shape human, social and cultural behaviour, our course can help you progress to your chosen career.

# Psychology

## Psychology A Level

A Level

2 Years

## Psychology

### Entry requirements

You will also need grade 5 or above in GCSE Maths and grade 5 or above in GCSE English Language or GCSE English Literature.

*Please note, vocational subjects cannot replace GCSEs for entry to A Levels.*

### What will I learn?

This course will provide you with a fascinating insight into the human mind, studying topics such as prejudice, memory, aggression and long-term behavioural change (Year 1) from a number of different perspectives, as well as clinical and criminological applications (Year 2). We consider the role and history of psychological research and understanding the individuals that operate within it. You will be introduced to rich and in-depth research, understanding what we have learned from these studies and consideration of how the methodology can be improved.

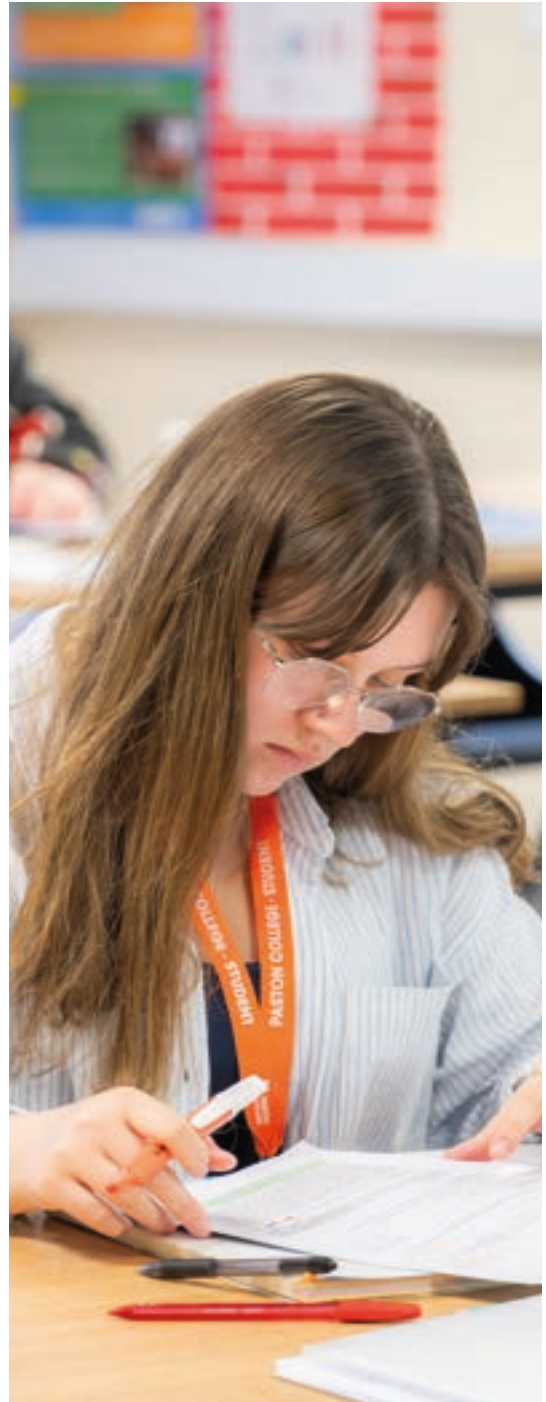
You will learn to design your own studies, evaluate scientific research, calculate and interpret statistics effectively, and operate within complex ethical issues.

### How am I assessed?

You will be assessed by three written exam papers at the end of the course that cover Foundations in Psychology, Applications of Psychology and Psychological Skills.

### What next?

Many students go on to study psychology at undergraduate level but this is by no means the only option. A Level Psychology offers many transferable skills useful in a variety of career paths and future education, such as critical thinking skills, application of knowledge to novel contexts and assessing the credibility of information.



## Course essentials:



### Courses

#### A Level

Sociology



### Careers

#### Human Resources Manager

£35-150k per year

#### Mental Health Nurse

£28-43k per year

#### Psychologist

£44-57k per year

#### Teacher

£24-40k per year

# Sociology

**Are you intrigued by what makes people tick? Do you question why societies function differently and how these work? Then studying psychology & sociology could be for you.**

## What is it about?

You will question, debate and reflect upon the nature of society and individuals within it. Our expert teaching staff will guide you to develop key analytical skills, as well as insight into human behaviour.

## What will I do?

You will learn to design experiments, evaluate scientific research, use statistics effectively and deal with ethical issues. You will learn how psychology and sociology can open many career paths as this subject is not only useful for those interested in becoming health professionals, but also for those interested in a broad range of jobs involving the management of people.

## Progression

You can progress to degree level study at university or college. You can go into an extensive range of careers where people are the focus, such as journalism, nursing, marketing or human resources. You might also want to study for a BA (Hons) in Psychology with Sociology at City College.

## Is it suitable for me?

Courses are perfect for those who have an inquisitive and open mind. If you're interested in understanding the influences that shape human, social and cultural behaviour, our courses can help you progress to your chosen career.

## Unique opportunities

You will have the opportunity to hear from guest speakers from the world of psychology and sociology at our student conferences and attend a variety of related events outside of college.



# Sociology

## Sociology A Level

A Level

2 Years

## Sociology

### Entry requirements

Minimum of 2 6/B grades and 3 4/C grades at GCSE. You will also need grade 5 or above in GCSE English Language OR grade 5 or above in GCSE English Literature and grade 4/C or above in GCSE English Language.

*Please note, vocational subjects cannot replace GCSEs for entry to A Levels. You must also study English Language and/or Maths GCSE if you have not already achieved a minimum of grade 4/C in these subjects.*

### What will I learn?

The Sociology A Level course will help you to develop an understanding of social frameworks and how we, as individuals, operate within these. You will explore theories and studies that will assist you in analysing inequality, discrimination, and privilege.

During the course you will study a fascinating combination of education, culture and identity research methods, beliefs in society and crime and deviance.

### How am I assessed?

You will be assessed via three written exam papers at the end of the course that focus on the following topics: education and research methods, family, households, beliefs and society and crime, deviance, theory and methods.

### What next?

Previous students have progressed to degree courses at university to study Sociology and other social sciences, humanities and people focused subjects. The course also develops key transferable skills that will help students progress directly into employment.



## Course essentials:



### Courses

#### A Level

Textile Design



### Careers

#### Textiles Designer

£22-40K per year

#### Graphic Designer

£20-40K per year

# Textile Design

**Are you creative and imaginative and love exploring materials, techniques and processes? Do you enjoy designing and making in a practical, hands-on way? Problem solving and developing an idea? Then Textile Design is the course for you.**

## What is it about?

Textile Design is about exploring a range of areas such as fashion design, costume design, domestic textiles, installed textiles and digital textiles. You will learn many practical techniques and find an area of textiles which suits you. It's not just about sewing!

## What will I do?

You will learn a wide range of techniques such as screen printing, weaving, surface design, embroidery, quilting, felt making and digital print. It is a hands on, practical course and embraces your independent ideas and individuality.

The first part of the course is built around developing your skills in a series of workshops and set briefs. Within each brief you will generate and develop your own ideas, experiment, and explore a range

of materials, techniques and processes and develop your wider understanding of textiles through research.

You will also develop an understanding of historical and contemporary influences on graphic design, inspiring your own ideas and outcomes.

You will exhibit your work in the annual Paston Art Show in June each year and there are opportunities to go on trips abroad to Amsterdam and Berlin.

## Progression

This course builds on the skills, knowledge and understanding developed through study at GCSE. At the end of this course, you will have the skills, knowledge and understanding needed for higher education. Possible degree options are Constructed Textiles, Contemporary Textiles, Costume Design, Digital Textiles, Fashion Design, Fashion Promotion/ Merchandising, Footwear Design, Printed Textiles, Sportswear Design, Surface Design, Textile Design, Textile Science and Technology and Theatre Design.

## Is it suitable for me?

If you enjoy art and design, being creative, exploring and experimenting with ideas practically and getting messy then textiles is the course for you.

# Textile Design

Textile Design A Level

## Textile Design

A Level

2 Years

### Entry requirements

Minimum of 2 6/B grades and 3 4/C grades at GCSE. You will also need grade 4/C or above in GCSE Art or Textiles. If you did not take GCSE Art or Textiles you must have a portfolio approved at interview.

*Please note, vocational subjects cannot replace GCSEs for entry to A Levels. You must also study English Language and/or Maths GCSE if you have not already achieved a minimum of grade 4/C in these subjects.*

### What will I learn?

You will combine practical skills with theoretical insight to develop your artistic and creative identity. You will participate in unique workshops to build your knowledge and work on your own personal investigation with assistance from expert teaching staff.

Building on key techniques, you will develop analytical skills by conducting your own research project with experimentation. This will culminate in the development and production of a final piece which will be showcased at our end of year show.

### How am I assessed?

**Component 1:** You will develop work for a personal investigation into an idea, issue, concept or theme supported by written material. This will count for 60% of your final mark.

**Component 2:** You will produce personal work in response to one of eight exciting starting points. This will count for 40% of your final mark.

### What next?

Students have progressed to degree courses to study Textiles and other visual arts such as decorative arts, knitwear design, fashion, and fashion management. The course also develops key transferable skills that will help students progress directly into employment.





# Vocational Studies

**The Vocational Foundation Programme provides a high-quality route onto Level 3 study, whether that be A Levels, BTECs or T Levels.**

## What is it about?

The course is designed for students who would benefit from the extra year, the additional study time and preparation before starting their Level 3 course.

## What will I do?

You will work towards 2 qualifications and each qualification has different units and projects that will be completed throughout the course.

This course allows you to explore and prepare fully for Level 3 study and/or employment. You will develop research and study skills through undertaking a Higher Project of your choice which will allow you to engage in critical debate, reflect and synthesis your research, then draw up and evaluate your conclusions.

You will also acquire practical skills to enhance your performance in the workplace and prepare you to undertake a work experience placement or volunteering in the local community.

In addition, you will have the opportunity to taste a range of Level 3 courses and subjects at Paston to get a feel for what course you wish to progress onto.

## Progression

Progression can be to your chosen Level 3 course, whether that is vocational or A Levels. The expectation is that students wishing to progress to a Level 3 course will have met the 90% attendance target plus have demonstrated a good level of performance in terms of work progress and behaviour.

Students should also achieve at least a Merit overall for the Level 2 qualification and achieved GCSE English and Maths to the required grade.

The course can lead you into a wide variety of different occupations in a wide range of business environments. Having completed this course, the next step may be to continue their studies either in an apprenticeship or other subject areas.

## Is it suitable for me?

If you're committed to Level 3 study but need extra support, this course is perfect for you. You will be able to explore what Level 3 study is all about, whilst learning the practical and professional study skills to thrive in the future, therefore ensuring you make the right progression decision.

## Progression

Progression can be to your chosen Level 3 course, whether that is vocational or A Levels. The expectation is that students wishing to progress to a Level 3 course will have met the 90% attendance target plus have demonstrated a good level of performance in terms of work progress and behaviour. You should also achieve at least a Merit overall for the Level 2 qualification and achieved GCSE English and Maths to the required grade.



# Vocational Foundation Programme

## Level 2 Vocational Foundation Programme

### Vocational Foundation Programme

1 Year

#### Entry requirements

Five GCSEs at grade 3 or above including either GCSE English Language or Maths at grade 4 or above.

You will also need to complete a successful interview. If you have not achieved grades 4 in GCSE English Language or GCSE Maths you will continue to study these qualifications alongside the course.

#### What will I learn?

The Level 2 Foundation Year will give you the opportunity to explore what Level 3 study is like and prepare you for future study.

The Key Principles of studying the Level 2 Vocational Foundation Year is to:

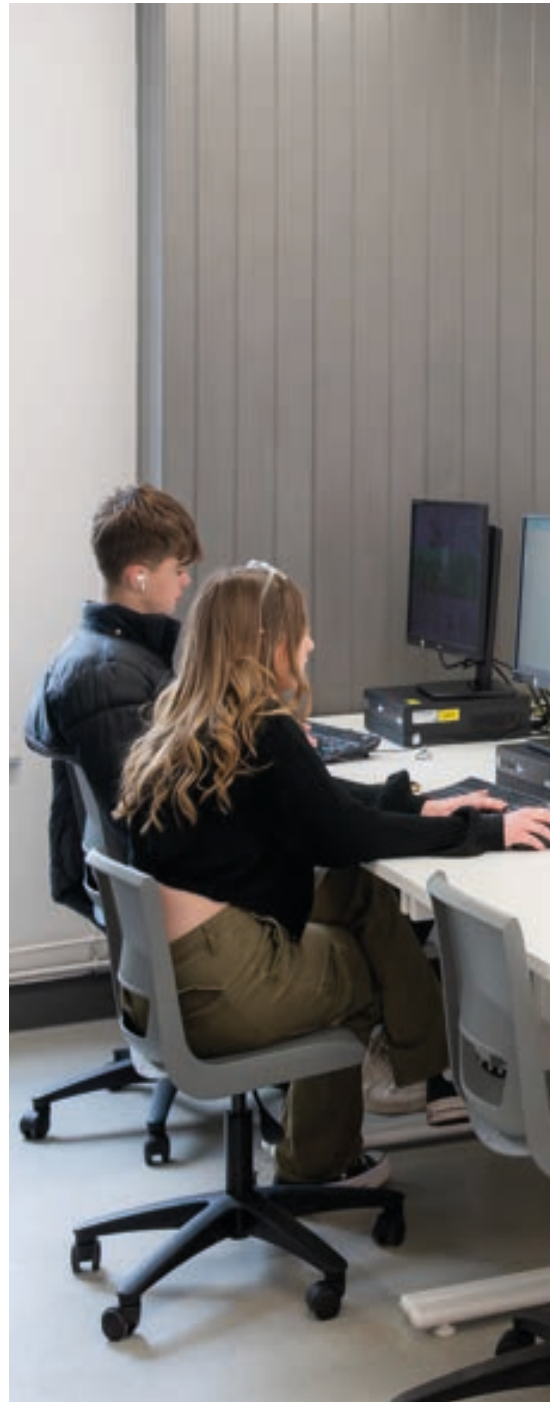
- Provide relevant preparation for what students will experience at a higher level of study
- Develop core knowledge, skills and behaviours that prepare students for progressing to level 3 study in their chosen subject
- Help students to make the right decision about what to do after the programme of study

The course will also provide you with a wide range of theoretical and technical skills that can be utilised in a wide range of careers and industries.

#### How am I assessed?

The Level 2 Vocational Foundation Year runs two qualifications that are assessed through coursework, there are no formal examinations. However, if the student is taking GCSE English or maths as part of their programme of study, there will be exams for those.

Coursework assignments will be assessed through written assignments, group work and presentations. You will also undertake a work experience placement or engage with a community project or volunteering.



# Oxbridge & A+ Programmes



## A+ Programme

If you are hoping to take highly competitive subjects such as Medicine, Dentistry or Veterinary Science at university, or are interested in studying any subject at Oxford or Cambridge, then the A+ Programme might be for you.

This programme provides support for the additional entry exams you are likely to have to take. The programme also offers assistance and preparation for interviews and other tasks.

Students on the A+ programme are expected to take the EPQ (Extended Project Qualification) which is highly regarded by universities alongside 3 A Level subjects. It is an individual research project which gives students an opportunity to broaden their knowledge and to develop their research skills in an area of their choice.

This programme is only available to students who achieve a minimum of 3 GCSEs at grade 8/A\* plus 5 at grade 7/A and a minimum of grade 4/C in English Language and Maths.



## Oxbridge Programme

The Oxbridge Programme is an extension of the A+ programme and is suitable for those who are looking for specialist guidance and support with their applications to Cambridge or Oxford Universities.

In order for your Oxbridge application to be successful, you need careful preparation and specialist guidance to develop and practise academic skills beyond those required for A Level. An important part of this is preparation for entrance tests such as the Thinking Skills Assessment, STEP papers (Maths) and other subject-specific tests that you will need to sit. You will also be given support to prepare for your interview.

Alongside this, there will also be opportunities to visit the universities, attend summer schools and shadow current Oxbridge students to help you in your decision-making process.

# Leisure Learning

More courses coming soon!

## Explore a hobby, hone a skill, find a passion.

We offer a wide range of part time adult courses for those who want to learn something new, develop a new skill or just have fun.

Get creative with courses such as art, cookery, floristry and photography. Explore your fascination and expand your knowledge in archaeology or criminology. Learn a new practical skill like welding or discover a new passion with specialist courses in beekeeping, dog grooming and willow basketry. Whatever your interest we are sure to have a course for you.

All our courses are delivered by both our in-house experts and external specialists to ensure your new hobby has the best possible start. This means you will be provided with an outstanding learning experience and access to our fantastic facilities.

Find out more at:  
[ccn.ac.uk/leisure](http://ccn.ac.uk/leisure)  
[easton.ac.uk/leisure](http://easton.ac.uk/leisure)

*Please note, these courses are currently only delivered at our Norwich and Easton campuses.*



### Course costs

All courses are priced individually.



# Inclusive Learning

To find out more, email: [SEN@ccn.ac.uk](mailto:SEN@ccn.ac.uk) or call: (01603) 773 311

**Inclusive Learning offers a specialist provision for learners with additional needs and/or disabilities at our Paston site.**

## Facilities:

We have 2 dedicated classrooms for our Inclusive Learning courses, and these are based at the Lawn's site.

Support is provided at breaks and lunchtimes so that our students can access the main facilities at the college such as the campus café.

Students use the local Church Hall for their cooking sessions and for hosting their pop-up café.

As part of their programme of study students can access a weekly sport and active leisure session in the campus sports hall.

## Find out more:

Call or email our admissions team and request an Inclusive Learning Prospectus to see our full course offer across our three campuses - [admissions@ccn.ac.uk](mailto:admissions@ccn.ac.uk). Or call: (01603) 773 311

Come and meet our staff at one of our open events for a chat about potential course options and have a tour of our onsite facilities.

## Open event likely to be too busy for you?

Don't worry, you can book a slot at one of our quiet hour events. These sessions run from 9am-10am at our Norwich & Easton campuses on our Saturday open events. You can book a 20min slot with one of our staff who will give you a personalised tour and talk you through your options. These events are always very well attended so we advise you to book early to avoid disappointment.

If required we can also arrange specific 1:1 visits and work closely with our local feeder schools, offering school visits for year 10 and 11 cohorts.





# Inclusive Learning

Multi Enterprise / Ticket Paston

Entry Level

## Multi Enterprise

1 Year

### Entry requirements

This course is designed for students who are aged 16-25 and who have additional needs and/or disabilities. There are no formal Entry requirements for this course, however most learners who access this course will have an EHCP.

### What will I learn?

Multi Enterprise aims to provide you with a personalised learning programme that uses subjects such as Enterprise and work skills to help prepare you for a future beyond college. As a student on the course, you will work as a team to create and run enterprise activities which will begin to broaden your experience of work and develop an understanding of the skills you will require for future employment.

### How am I assessed?

During the course you will work towards achieving an Entry Level 3 Gateway Qualification in Enterprise. Your completed units for the qualification will be marked and assessed.

Your tutor will set you targets that will help you meet your EHCP outcomes, and your progress will be reviewed against these.

English and Maths qualifications at a level which suit you, assessment will be via formal examination.

### What next?

Ticket- Paston, Work Matters Supported Internships or MINT Supported Employment Agency

### Number of days / Group size

3 days a week. 8 per group.

Entry Level

## Ticket Paston

1 Year

### Entry requirements

This course is designed for students who are aged 16-25 and who have additional needs and/or disabilities. There are no formal Entry requirements for this course, however most learners who access this course will have an EHCP.

### What will I learn?

Ticket aims to provide you with a range of learning opportunities to develop the skills, qualities and attributes required for future employment. As a student on the course you will be encouraged to embrace the prospect of work, identify your strengths and areas for development and to recognise what skills and qualities you have to offer potential employers. Your lessons will build on key basic skills including English, Maths and ICT and will provide you with a host of practical opportunities to engage with the local community and local employers.

### How am I assessed?

During the course you will work towards achieving an E3 or L1 BTEC Work skills qualification. Your completed units for the qualification will be marked and assessed.

Your tutor will set you targets that will help you meet your EHCP outcomes, and your progress will be reviewed against these.

English and Maths qualifications at a level which suit you, assessment will be via formal examination.

### What next?

Work Matters Supported Internships or MINT Supported Employment Agency.

### Number of days / Group size

3 days a week. 8 per group.

# Professional Development

**Develop your skills and progress your career with our Professional Development courses.**

We offer a wide range of CPD and training courses and qualifications at beginner, intermediate and advanced levels in a wide range of areas including accounting, agriculture, business skills, cookery, human resources and floristry.

We pride ourselves on offering courses that work for you, with flexibility, and tailoring to your business needs. We also offer bespoke training solutions if required. Many of our courses are accredited by industry or professional bodies which means you gain essential professional qualifications that are valued by employers.

Find out more at:

[ccn.ac.uk/adults/professional-development](http://ccn.ac.uk/adults/professional-development)

[easton.ac.uk/adults/professional-development](http://easton.ac.uk/adults/professional-development)



# Adult Essential Skills

**You could develop your skills and knowledge by studying one of our English, Maths or Digital Skills courses part-time for free\* if you're aged 19+.**

These courses are valuable in gaining or improving your employment opportunities and life skills. Each course is a qualification that be used in the workplace and on your CV, whilst also building your confidence.

You will need to complete an initial assessment, which will determine your starting level, so you start on the right level for your current ability.

## **Courses available:**

- Digital Functional Skills, Entry Level 3
- Digital Functional Skills, Level 1
- Award in Digital & IT Skills, Level 2
- Certificate in Digital & IT Skills, Level 2
- GCSE Biology
- GCSE Psychology
- GCSE Sociology
- GCSE English
- GCSE Maths
- Functional Skills English
- Functional Skills Maths
- Digital Functional Skills



Find out more about our range of adult courses at:

**[paston.ac.uk/adults](http://paston.ac.uk/adults)**

# City College Norwich Courses



Take a look at the exciting options available to you at City College Norwich:

---

## A Levels

Art  
Biology  
Business  
Chemistry  
Drama & Theatre Studies  
English Language  
English Language & Literature  
English Literature  
Environmental Science  
Film Studies  
Further Mathematics  
Geography  
History  
Mathematics  
Media Studies  
Photography  
Physics  
Politics  
Psychology  
Religious Studies  
(Philosophy & Ethics)  
Sociology  
Textiles

## Apprenticeships

Accounting  
Bricklaying  
Business Administration  
Carpentry and Joinery  
Construction Management  
Customer Service  
Data Analyst  
Dental Nurse  
Early Years Educator  
Electrical  
Engineering  
General Farm Worker  
Hairdressing

Healthcare  
Hospitality  
Human Resources  
IT  
Land-Based Engineering  
Management  
Marketing  
Motor Vehicle  
Network Engineer  
Plumbing  
Property Maintenance  
Teaching  
Teaching Assistant

## Art Foundation & Pre Degree

*Pre-Degree Foundation Diplomas are designed to provide you with a broad range of skills and experiences prior to embarking on a university level degree:*

Art Foundation & The Media Learning Company

## Business, Management & Administration

Business  
Management & Administration

## Childcare & Early Years

Assisting Teaching  
Caring for Children  
Early Years Educator  
Early Years Practitioner  
Education and Childcare  
Education and Early Years

## Construction & Building Services

Bricklaying  
Carpentry and Joinery  
Design, Surveying and Planning  
Electrical  
Plumbing

## Creative Arts

**Architecture and 3D Design**  
Art & Design  
Creative Media Production & Technology  
Digital Art & Animation  
Fashion Textiles  
Fashion, Business and Retail  
Fine Art  
Games Design & Development  
Graphic Design and Illustration  
Photography

## Engineering

Automotive and Engineering  
Automotive Maintenance  
Engineering  
Light Vehicle Maintenance and Repair  
Maintenance, Installation and Repair

## ESOL (English for Speakers of Other Languages)

*These qualifications are widely recognised by employers and assist with progression into further education, employment and everyday life.*

Visit [ccn.ac.uk/ESOL](http://ccn.ac.uk/ESOL) to find out more.



## GCSEs for 16-18 year olds - Academic Progression

*Specifically designed to help you progress on to the next stage of your education and are split into pathways appropriate to your next steps:*

### Academic Progression 3-4 GCSE Programme

#### Academic Progression Insight

Visit [ccn.ac.uk/gcse](http://ccn.ac.uk/gcse) to find out more.

## Hairdressing, Beauty Therapy & Make Up Artistry

### Barbering

### Beauty Therapy

### Hairdressing

### Media Make Up Artistry

### Theatrical, Special Effects & Media Make Up Artistry

## Health & Social Care

### Health and Science

### Health and Social Care

### Supporting Healthcare - Adult

### Nursing

### Supporting Healthcare -

### Supporting Mental Health

## Hospitality & Catering

### Cookery

### Hospitality and Catering

### Professional Cookery

## Inclusive Learning

These courses help you to progress to your next steps through our bespoke small group programmes.

Visit: [ccn.ac.uk/inclusive-learning](http://ccn.ac.uk/inclusive-learning) to find out more.

## Information Technology & Computing

### Digital

### Digital Production, Design and Development

### Digital Support Services Infrastructure

## Performing Arts & Production

### Acting for Stage and Screen

### Dance

### Media, Broadcast and

### Production

### Music Performance and

### Production

### Musical Theatre

## Sciences

*Our Science courses are available at Easton College.*

## Sport & Outdoor Leadership

*Our Sport and Outdoor Leadership courses are available at Easton College.*

## Travel & Tourism

### Travel & Tourism

## Uniformed Services

*Our Uniformed Services courses are available at Easton College.*

## Discuss your options with our friendly Advice Shop

Our advisers offer free advice and guidance to help you make the right choice.

Contact our advisers in the Advice Shop on **01603 773 773** or [information@ccn.ac.uk](mailto:information@ccn.ac.uk)



# Easton College Courses



Take a look at the exciting options available to you at Easton College:

## Access to Higher Education

Criminal Justice & Policing  
Land Based Studies

## Agriculture

Agriculture  
Land Based Studies

## Agricultural Engineering

Land Based Technology

## Animal Studies

Animal Care  
Animal Management  
Animal Nursing  
Animal Science  
Land Based Studies (Animal)

## Forestry & Arboriculture

Tree and Woodland Management and Maintenance - Arboriculture

## Construction

Construction Multi Skills

## Degrees & Higher Education

Animal Science  
Professional Policing  
Sport, Health and Exercise

Science  
Wildlife and Conservation  
Zoology

## Environmental Conservation & Countryside Management

Environmental Conservation and Countryside Management  
Land and Wildlife Management

## Equine Studies

Equine Care  
Equine Management  
Work-based Horse Care

## Floristry

Floristry

## Horticulture

Horticulture

## Inclusive Learning

These courses help you to progress to your next steps through our bespoke small group programmes delivered by a team of dedicated staff.

Visit: [easton.ac.uk/inclusive-learning](http://easton.ac.uk/inclusive-learning) to find out more.

## Outdoor Leadership

Outdoor Leadership

## Sciences

Laboratory Science

## Sport

Fitness Services  
Performance and Excellence  
Sport  
Sport and Exercise Science  
Sport Coaching and Development

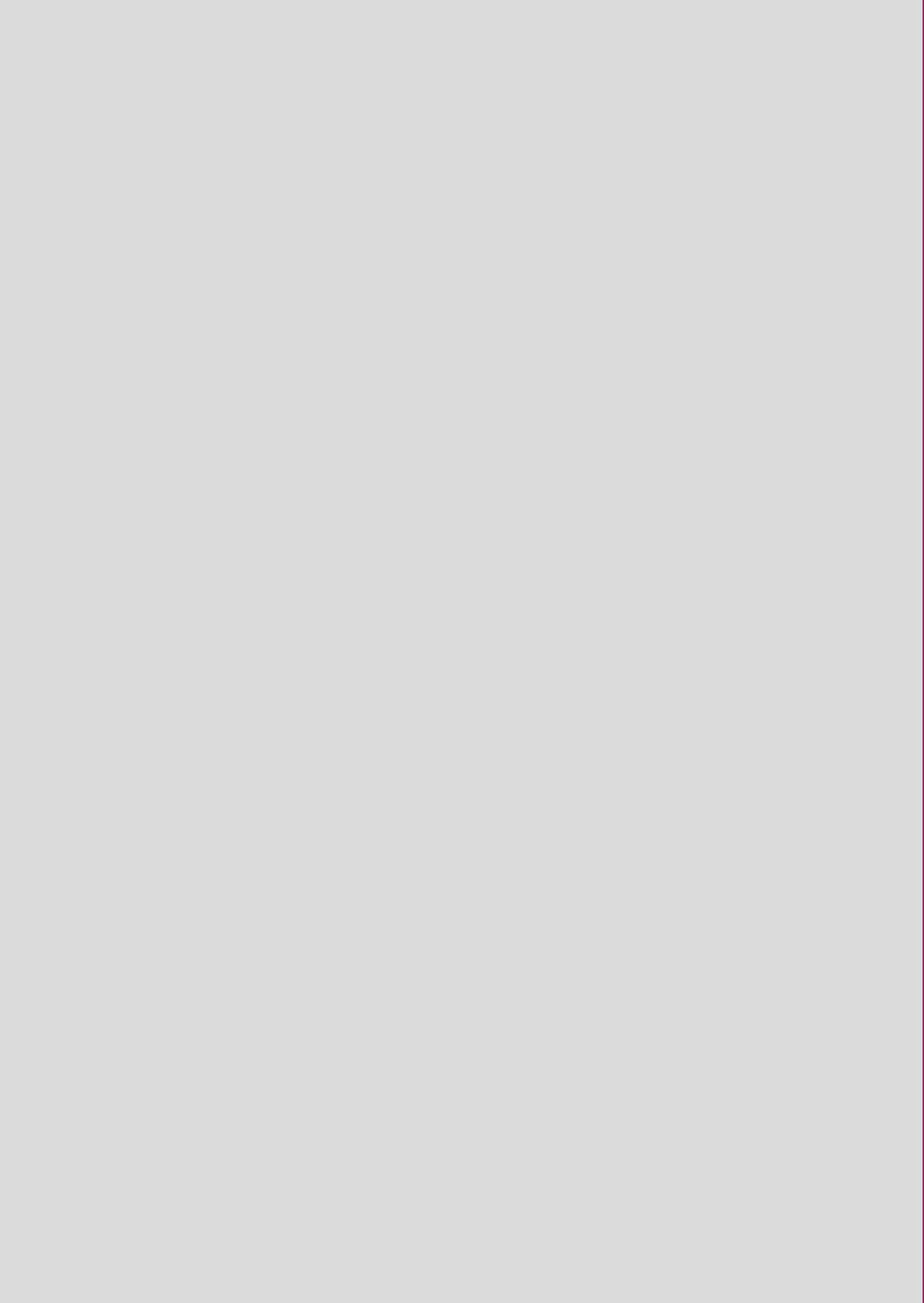
## Uniformed Services

Uniformed Services

## Apprenticeships

Bricklaying  
Carpentry and Joinery  
General Farm Worker  
Land-Based Service Engineering  
Livestock Technician  
Property Maintenance









## Paston College Open Events

26 September 2024 - 4:30pm - 7pm

9 November 2024 - 10am - 1pm

19 June 2025 - 4:30pm - 7pm

## Easton College Open Events

11 October 2024 - 5pm - 7:30pm

12 October 2024 - 10am - 1pm

28 June 2025 - 10am - 1pm

## City College Norwich Open Events

4 October 2024 - 5pm - 7:30pm

5 October 2024 - 10am - 1pm

21 June 2025 - 10am - 1pm

# Contact us

## **Paston College**

Grammar School Road

North Walsham,

Norfolk NR28 9JL

**t: +44 (0)1603 773 311**

**e: [information@ccn.ac.uk](mailto:information@ccn.ac.uk)**

**[www.paston.ac.uk](http://www.paston.ac.uk)**

# Find us on social media



[@pastoncollege](https://twitter.com/pastoncollege)



[@pastoncollege](https://www.instagram.com/pastoncollege)



[PastonCollege](https://www.facebook.com/PastonCollege)